



### Model: SCB03EH Cabinet Oven

LEWCO SCB Series Ovens feature bottom mounted heater boxes, thereby elevating the oven workspace to approximately 30" for easy loading and unloading. Standard cabinet ovens are offered with electric heat and horizontal airflow. Various shelving configurations available, please consult factory. Heavy-duty construction and industry standard components yield durable and reliable equipment. Each unit comes complete with a one year limited warranty and is fully assembled, wired, and tested prior to shipment. All LEWCO ovens are manufactured to meet the requirements of NFPA 86, the national standard for industrial ovens and furnaces.

#### Temperature

- Up to 350°F (177°C)

#### Heating Medium

- Electric, low watt density Incoloy® heaters provide years of trouble free service.
- Standard heater bank assemblies are installed in high velocity ductwork to maximize heat transfer.

#### Airflow Pattern

- Horizontal Airflow: Hot air is supplied from one side wall and pulled across horizontally to the opposite side wall. This airflow is best for parts being heated on shelves.

#### Available Sizes

- The SCB series is offered in (5) standard sizes with workspace dimensions ranging from:
  - Width: 24" - 48"
  - Depth: 24" - 48"
  - Height: 24" - 48"

#### General Construction

- 16 ga. aluminized steel interior
- 18 ga. cold rolled steel exterior
- Heat loss is minimized by a unique wall design featuring a welded inner shell and a completely isolated outer frame and covers.

#### Doors

- Heavy-duty door on an isolated door frame minimizes heat loss. Wire core gaskets create a tight seal for efficient heating.
- Explosion venting latches
- Optional: Door Window

#### Input Voltage

- Standard: 480/3/60
- Optional: 208/ 3/60
- Please consult factory for other available options.

#### Controls

- Standard: Single-point process temperature controller and redundant high-limit controllers housed in a NEMA 12 enclosure with full voltage lockable disconnect.
- Optional:
  - Door switch
  - Batch timer
  - Ramp/ soak controller
  - Data logger/ chart recorder
  - Zero speed switch for fans

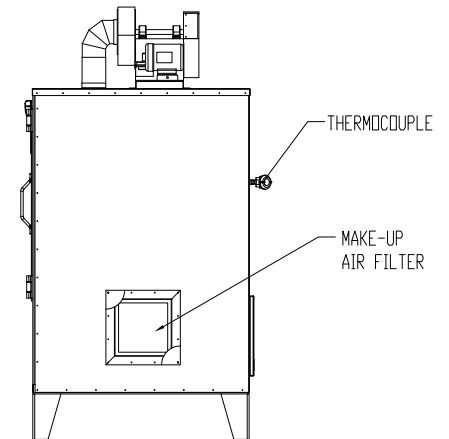
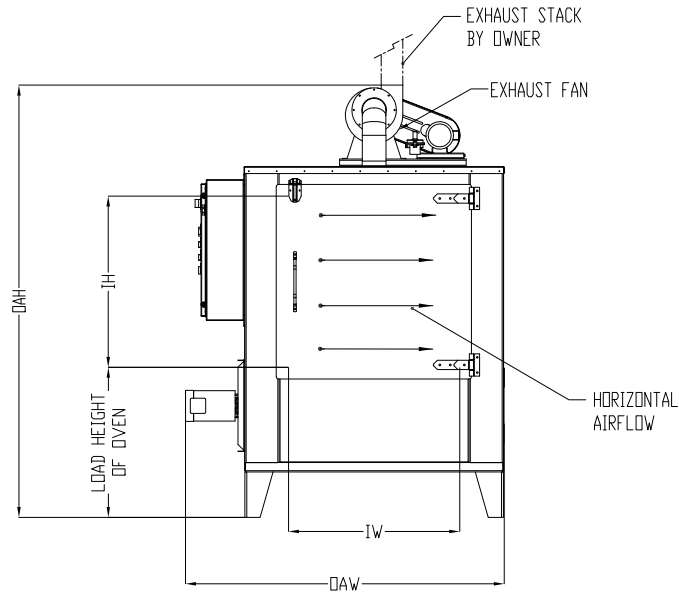
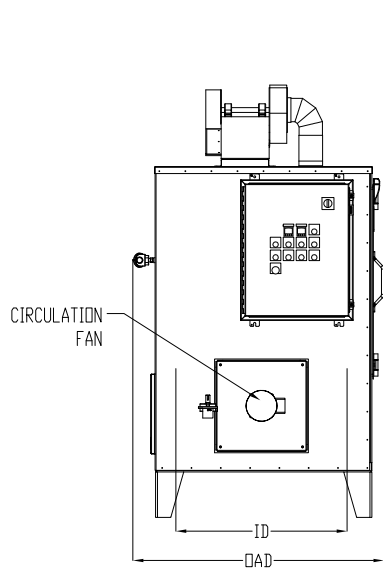
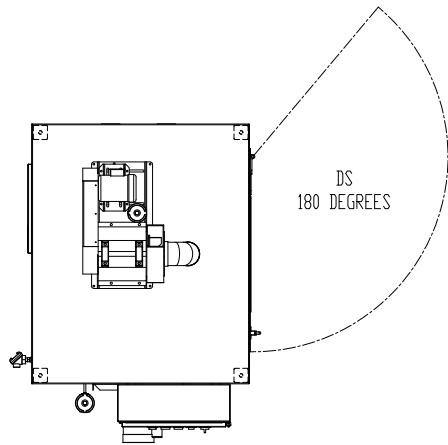
#### Finish

- Standard: Blue or gray alkyd oil base paint
- Optional: Premium finish for corrosive areas

| Model<br>(NFPA Class B) | Overall Dimensions |    |    | Door Swing<br>Radius | Workspace Dimensions |    |    | Workspace Volume<br>(cubic ft.) | Heater Bank<br>(kW) | Circulating Fan<br>(CFM) | Motor<br>(HP) | Air Changes<br>per Minute | Exhaust Fan<br>Capacity<br>(CFM) | Exhaust<br>Motor<br>(HP) | Solvents<br>per Batch<br>(Gals.) | Ships Fully<br>Assembled |
|-------------------------|--------------------|----|----|----------------------|----------------------|----|----|---------------------------------|---------------------|--------------------------|---------------|---------------------------|----------------------------------|--------------------------|----------------------------------|--------------------------|
|                         | "W                 | "D | "H |                      | "W                   | "D | "H |                                 |                     |                          |               |                           |                                  |                          |                                  |                          |
| SCB03EH-24-24-24        | 60                 | 36 | 62 | 30"                  | 24                   | 24 | 24 | 8                               | 18                  | 700                      | 1             | 87.50                     | N/A                              | N/A                      | 0                                | Yes                      |
| SCB03EH-24-24-48        | 60                 | 36 | 86 | 30"                  | 24                   | 24 | 48 | 16                              | 18                  | 700                      | 1             | 43.75                     | N/A                              | N/A                      | 0                                | Yes                      |
| SCB03EH-36-36-36        | 72                 | 48 | 74 | 42"                  | 36                   | 36 | 36 | 27                              | 18                  | 700                      | 1             | 25.93                     | N/A                              | N/A                      | 0                                | Yes                      |
| SCB03EH-36-36-48        | 72                 | 48 | 86 | 42"                  | 36                   | 36 | 48 | 36                              | 18                  | 700                      | 1             | 19.44                     | N/A                              | N/A                      | 0                                | Yes                      |
| SCB03EH-48-48-48        | 84                 | 60 | 86 | 54"                  | 48                   | 48 | 48 | 64                              | 36                  | 1,000                    | 1             | 15.63                     | N/A                              | N/A                      | 0                                | Yes                      |

| Model<br>(NFPA Class A) | Overall Dimensions |    |    | Door Swing<br>Radius | Workspace Dimensions |    |    | Workspace Volume<br>(cubic ft.) | Heater Bank<br>(kW) | Circulating Fan<br>(CFM) | Motor<br>(HP) | Air Changes<br>per Minute | Exhaust Fan<br>Capacity<br>(CFM) | Exhaust<br>Motor<br>(HP) | Solvents<br>per Batch<br>(Gals.) | Ships Fully<br>Assembled |
|-------------------------|--------------------|----|----|----------------------|----------------------|----|----|---------------------------------|---------------------|--------------------------|---------------|---------------------------|----------------------------------|--------------------------|----------------------------------|--------------------------|
|                         | "W                 | "D | "H |                      | "W                   | "D | "H |                                 |                     |                          |               |                           |                                  |                          |                                  |                          |
| SCB03EH-24-24-24        | 60                 | 36 | 62 | 30"                  | 24                   | 24 | 24 | 8                               | 18                  | 700                      | 1             | 87.50                     | 62                               | 1/4                      | 0.06                             | Yes                      |
| SCB03EH-24-24-48        | 60                 | 36 | 86 | 30"                  | 24                   | 24 | 48 | 16                              | 18                  | 700                      | 1             | 43.75                     | 62                               | 1/4                      | 0.06                             | Yes                      |
| SCB03EH-36-36-36        | 72                 | 48 | 74 | 42"                  | 36                   | 36 | 36 | 27                              | 36                  | 700                      | 1             | 25.93                     | 62                               | 1/4                      | 0.06                             | Yes                      |
| SCB03EH-36-36-48        | 72                 | 48 | 86 | 42"                  | 36                   | 36 | 48 | 36                              | 36                  | 700                      | 1             | 19.44                     | 62                               | 1/4                      | 0.06                             | Yes                      |
| SCB03EH-48-48-48        | 84                 | 60 | 86 | 54"                  | 48                   | 48 | 48 | 64                              | 36                  | 1,000                    | 1             | 15.63                     | 62                               | 1/4                      | 0.06                             | Yes                      |

**NOTE:** Sizes are approximate. LEWCO, Inc. reserves the right to change specifications without notice.



THE NATIONAL FIRE PROTECTION ASSOCIATION'S STANDARD NFPA 86 DOCUMENTS GUIDELINES FOR THE SAFE OPERATION OF OVENS AND FURNACES. THIS STANDARD DEFINES AN OVEN OCCASIONED BY THE PRESENCE OF FLAMMABLE VOLATILES OR COMBUSTIBLE MATERIAL AS "CLASS A", AND FURTHER MANDATES SPECIFIC SAFETY EQUIPMENT ON THESE OVENS TO REDUCE THE RISK OF FIRE OR EXPLOSION. SIMILARLY, OVENS OR FURNACES WHEREIN NO FLAMMABLE VOLATILES OR COMBUSTIBLE MATERIALS ARE PRESENT ARE CONSIDERED "CLASS B". IT IS IMPERATIVE THAT THE USER OF HEAT PROCESSING EQUIPMENT BE KNOWLEDGEABLE REGARDING APPLICATION OF THE EQUIPMENT.

**MODEL:** SCB03EH  
**DESCRIPTION:** Standard Cabinet Oven, Bottom Heater, 300°F, Electric, Horizontal Air Flow  
**DRAWING:** SCB03EH SALES

LEWCO, INC. IS COMMITTED TO CONTINUOUS IMPROVEMENT AND RESERVES THE RIGHT TO CHANGE DESIGNS AND SPECIFICATIONS WITHOUT NOTICE.  
 THIS DRAWING IS CONFIDENTIAL AND MUST NOT BE COPIED, REPRODUCED OR USED FOR ANY PURPOSE WITHOUT THE WRITTEN CONSENT OF LEWCO, INC. ALL RIGHTS RESERVED.

DATE 12/30/14  
 REV 002  
 PAGE 3 OF 3

