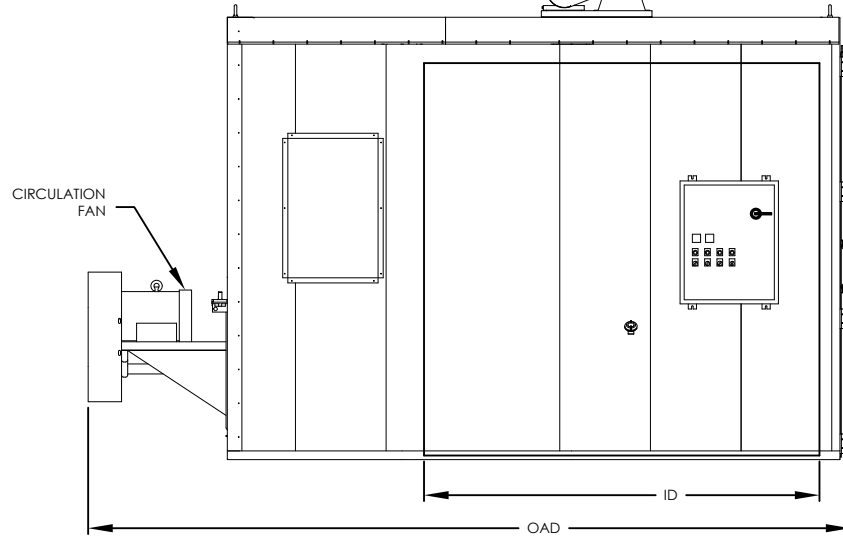
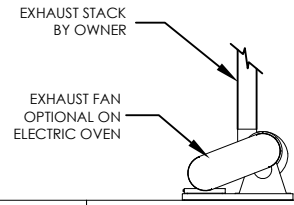
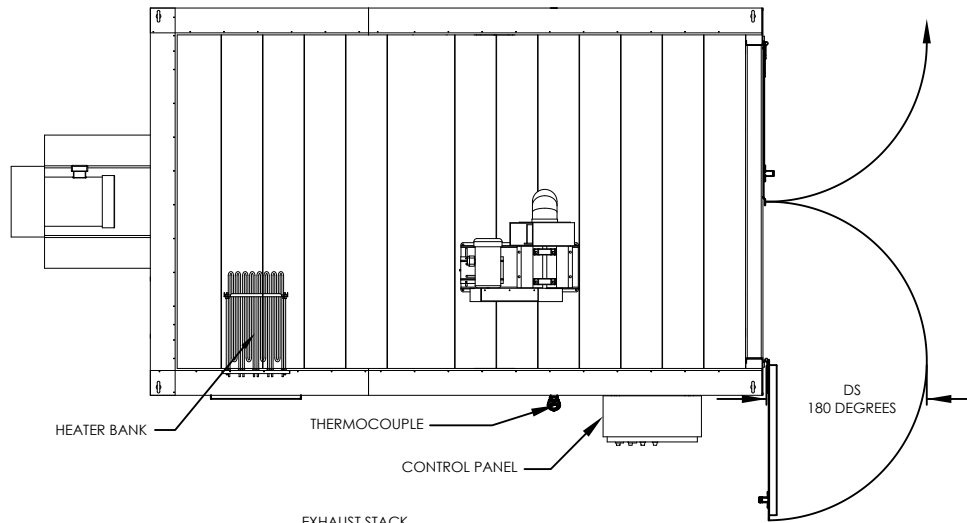


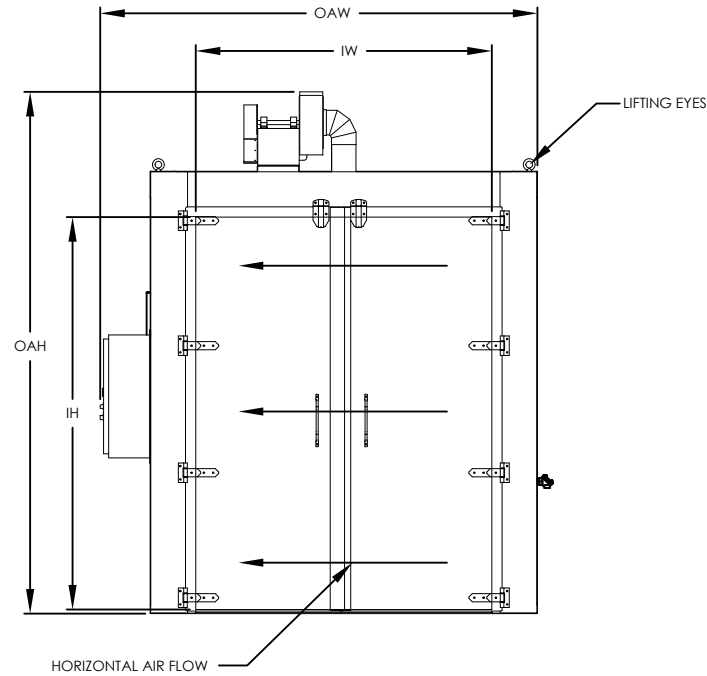


**Enhanced Walk-In Oven, Rear Heater, 1200 F, Electric, Horizontal Air Flow
NFPA Class B**

Model	Workspace Dimensions			Heat Input	Circulating Blower (CFM)	Ships
	"W	"D	"H			
EWR12EH-48-48-60	48	48	60	72	3500	Fully Assembled
EWR12EH-48-48-72	48	48	72	81	4000	Fully Assembled
EWR12EH-48-48-96	48	48	96	90	5000	Fully Assembled
EWR12EH-48-72-72	48	72	72	90	5500	Fully Assembled
EWR12EH-48-72-96	48	72	96	108	8000	Fully Assembled
EWR12EH-48-96-72	48	96	72	108	8000	Fully Assembled
EWR12EH-48-96-96	48	96	96	153	10000	Fully Assembled
EWR12EH-60-60-60	60	60	60	90	5000	Fully Assembled
EWR12EH-60-60-72	60	60	72	99	6000	Fully Assembled
EWR12EH-60-60-96	60	60	96	117	8000	Fully Assembled
EWR12EH-60-72-72	60	72	72	108	7000	Fully Assembled
EWR12EH-60-72-96	60	72	96	144	10000	Fully Assembled
EWR12EH-60-96-96	60	96	96	162	14000	Fully Assembled
EWR12EH-72-72-72	72	72	72	117	9000	Fully Assembled
EWR12EH-72-72-96	72	72	96	153	12000	Fully Assembled
EWR12EH-72-96-96	72	96	96	180	16000	Fully Assembled



MODEL	WORKSPACE DIMENSIONS				OVERALL DIMENSIONS		
	IW (in)	ID (in)	IH (in)	DS (in)	OAW (in)	OAD (in)	OAH (in)
EWR12EH-48-48-60	48	48	60	34	82	109	73
EWR12EH-48-48-72	48	48	72	34	82	113	85
EWR12EH-48-48-96	48	48	96	34	82	119	109
EWR12EH-48-72-72	48	72	72	34	82	147	85
EWR12EH-48-72-96	48	72	96	34	82	153	109
EWR12EH-48-96-72	48	96	72	34	82	177	85
EWR12EH-48-96-96	48	96	96	34	82	177	109
EWR12EH-60-60-60	60	60	60	40	94	131	73
EWR12EH-60-60-72	60	60	72	40	94	135	85
EWR12EH-60-60-96	60	60	96	40	94	141	109
EWR12EH-60-72-72	60	72	72	40	94	153	85
EWR12EH-60-72-96	60	72	96	40	94	153	109
EWR12EH-60-96-96	60	96	96	40	94	184	109
EWR12EH-72-72-72	72	72	72	46	106	153	85
EWR12EH-72-72-96	72	72	96	46	106	153	109
EWR12EH-72-96-96	72	96	96	46	108	189	109



THE NATIONAL FIRE PROTECTION ASSOCIATION'S STANDARD NFPA 86 DOCUMENTS GUIDELINES FOR THE SAFE OPERATION OF OVENS AND FURNACES. THIS STANDARD DEFINES AN OVEN OCCASIONED BY THE PRESENCE OF FLAMMABLE VOLATILES OR COMBUSTIBLE MATERIAL AS "CLASS A" AND FURTHER MANDATES SPECIFIC SAFETY EQUIPMENT ON THESE OVENS TO REDUCE THE RISK OF FIRE OR EXPLOSION. SIMILARLY, OVENS OR FURNACES WHEREIN NO FLAMMABLE VOLATILES OR COMBUSTIBLE MATERIALS ARE PRESENT ARE CONSIDERED "CLASS B". IT IS IMPERATIVE THAT THE USER OF HEAT PROCESSING EQUIPMENT BE KNOWLEDGEABLE REGARDING APPLICATION OF THE EQUIPMENT.

MODEL: EWR12EH
 DESCRIPTION: Enhanced Walk-In Oven, Rear Heater, 1200 F, Electric, Horizontal Air Flow
 DRAWING: EWR12EH SALES

LEWCO, INC. IS COMMITTED TO CONTINUOUS IMPROVEMENT AND RESERVES THE RIGHT TO CHANGE DESIGNS AND SPECIFICATIONS WITHOUT NOTICE.
 THIS DRAWING IS CONFIDENTIAL AND MUST NOT BE COPIED, REPRODUCED OR USED FOR ANY PURPOSE WITHOUT THE WRITTEN CONSENT OF LEWCO, INC. ALL RIGHTS RESERVED.

DATE 4/30/2014
 REV 001
 PAGE 1 OF 1

