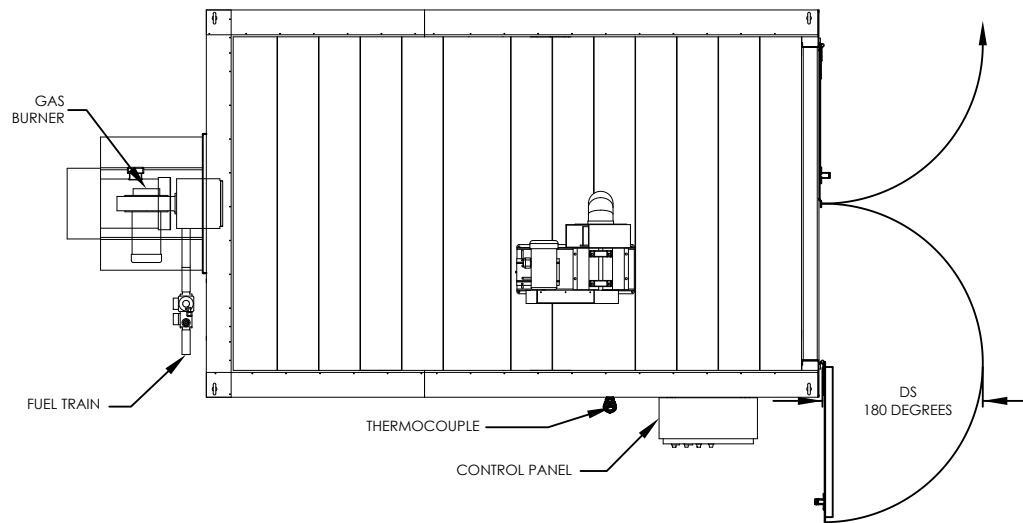


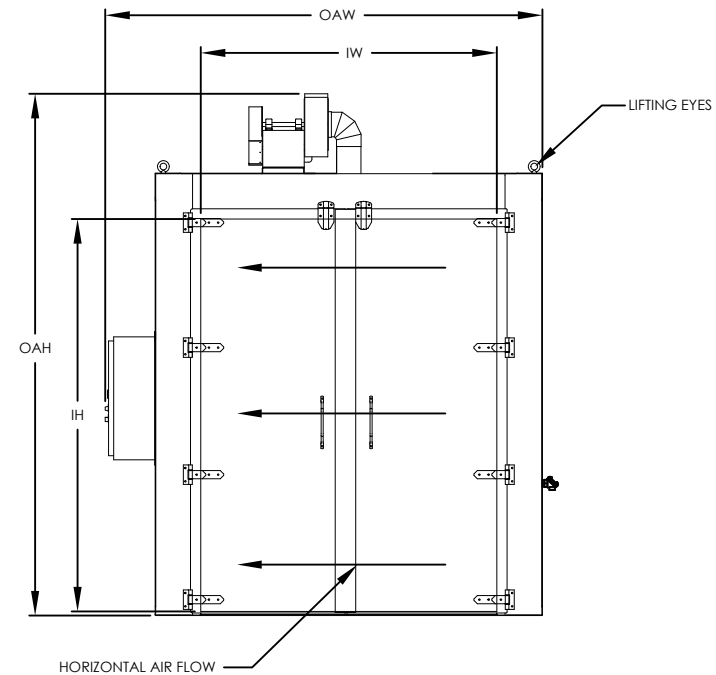
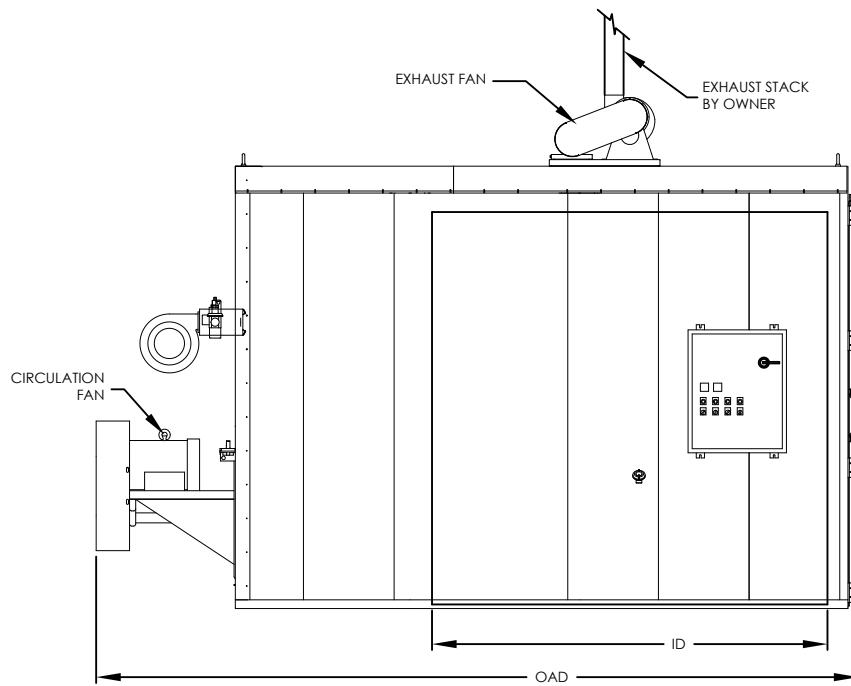


**Enhanced Walk-In Oven, Rear Heater, 800 F, Fuel Fired, Horizontal Air Flow
NFPA Class B**

Model	Workspace Dimensions			Heat Input	Circulating Blower (CFM)	Exhaust (ACFM)	Ships
	"W	"D	"H				
EWR08FH-48-48-60	48	- 48	- 60	200,000 BTUH	2000	250	Fully Assembled
EWR08FH-48-48-72	48	- 48	- 72	400,000 BTUH	2500	250	Fully Assembled
EWR08FH-48-48-96	48	- 48	- 96	400,000 BTUH	3500	250	Fully Assembled
EWR08FH-48-72-72	48	- 72	- 72	400,000 BTUH	4000	250	Fully Assembled
EWR08FH-48-72-96	48	- 72	- 96	400,000 BTUH	5000	250	Fully Assembled
EWR08FH-48-96-72	48	- 96	- 72	400,000 BTUH	5000	250	Fully Assembled
EWR08FH-48-96-96	48	- 96	- 96	400,000 BTUH	7000	250	Fully Assembled
EWR08FH-60-60-60	60	- 60	- 60	400,000 BTUH	3500	250	Fully Assembled
EWR08FH-60-60-72	60	- 60	- 72	400,000 BTUH	4000	250	Fully Assembled
EWR08FH-60-60-96	60	- 60	- 96	400,000 BTUH	5000	250	Fully Assembled
EWR08FH-60-72-72	60	- 72	- 72	400,000 BTUH	4500	250	Fully Assembled
EWR08FH-60-72-96	60	- 72	- 96	400,000 BTUH	6000	250	Fully Assembled
EWR08FH-60-96-96	60	- 96	- 96	700,000 BTUH	8000	250	Fully Assembled
EWR08FH-72-72-72	72	- 72	- 72	400,000 BTUH	5500	250	Fully Assembled
EWR08FH-72-72-96	72	- 72	- 96	400,000 BTUH	8000	250	Fully Assembled
EWR08FH-72-96-96	72	- 96	- 96	700,000 BTUH	10000	500	Fully Assembled



MODEL	WORKSPACE DIMENSIONS				OVERALL DIMENSIONS		
	IW (in)	ID (in)	IH (in)	DS (in)	OAW (in)	OAD (in)	OAH (in)
EWRO8FH-48-48-60	48	48	60	34	79	107	88
EWRO8FH-48-48-72	48	48	72	34	79	107	100
EWRO8FH-48-48-96	48	48	96	34	79	111	124
EWRO8FH-48-72-72	48	72	72	34	79	141	100
EWRO8FH-48-72-96	48	72	96	34	79	145	124
EWRO8FH-48-96-72	48	96	72	34	79	169	100
EWRO8FH-48-96-96	48	96	96	34	79	175	124
EWRO8FH-60-60-60	60	60	60	40	91	123	88
EWRO8FH-60-60-72	60	60	72	40	91	129	100
EWRO8FH-60-60-96	60	60	96	40	91	133	124
EWRO8FH-60-72-72	60	72	72	40	91	145	100
EWRO8FH-60-72-96	60	72	96	40	91	151	124
EWRO8FH-60-96-96	60	96	96	40	91	175	124
EWRO8FH-72-72-72	72	72	72	46	103	151	100
EWRO8FH-72-72-96	72	72	96	46	103	151	124
EWRO8FH-72-96-96	72	96	96	46	105	182	124



THE NATIONAL FIRE PROTECTION ASSOCIATION'S STANDARD NFPA 86 DOCUMENTS GUIDELINES FOR THE SAFE OPERATION OF OVENS AND FURNACES. THIS STANDARD DEFINES AN OVEN OCCASIONED BY THE PRESENCE OF FLAMMABLE VOLATILES OR COMBUSTIBLE MATERIAL AS "CLASS A" AND FURTHER MANDATES SPECIFIC SAFETY EQUIPMENT ON THESE OVENS TO REDUCE THE RISK OF FIRE OR EXPLOSION. SIMILARLY, OVENS OR FURNACES WHEREIN NO FLAMMABLE VOLATILES OR COMBUSTIBLE MATERIALS ARE PRESENT ARE CONSIDERED "CLASS B". IT IS IMPERATIVE THAT THE USER OF HEAT PROCESSING EQUIPMENT BE KNOWLEDGEABLE REGARDING APPLICATION OF THE EQUIPMENT.

MODEL: EWR08FH
 DESCRIPTION: Enhanced Walk-In Oven, Rear Heater, 800 F, Gas, Horizontal Air Flow
 DRAWING: EWR08FH SALES

LEWCO, INC. IS COMMITTED TO CONTINUOUS IMPROVEMENT AND RESERVES THE RIGHT TO CHANGE DESIGNS AND SPECIFICATIONS WITHOUT NOTICE.
 THIS DRAWING IS CONFIDENTIAL AND MUST NOT BE COPIED, REPRODUCED OR USED FOR ANY PURPOSE WITHOUT THE WRITTEN CONSENT OF LEWCO, INC. ALL RIGHTS RESERVED.

DATE 4/30/2014
 REV 001
 PAGE 1 OF 1

