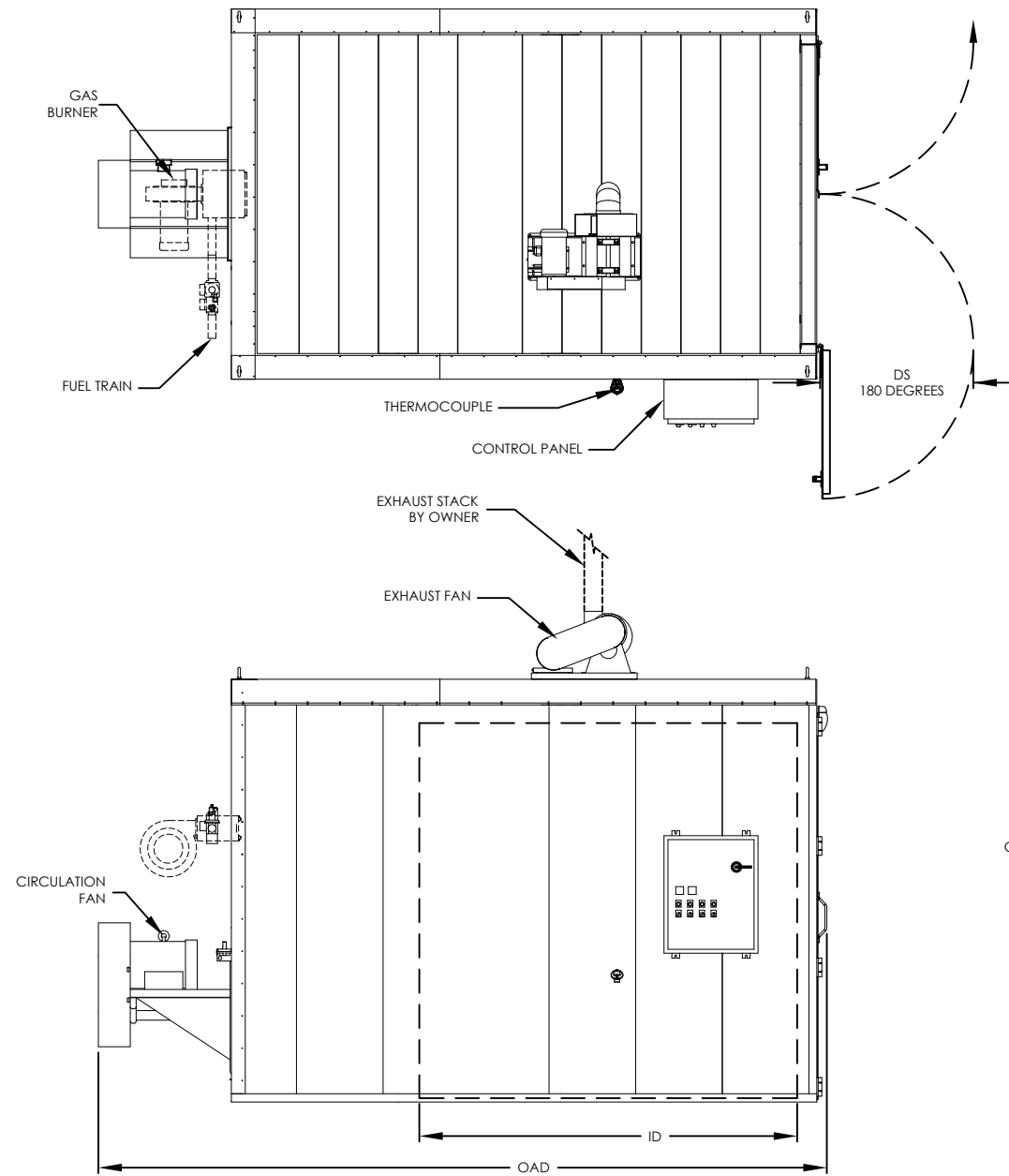


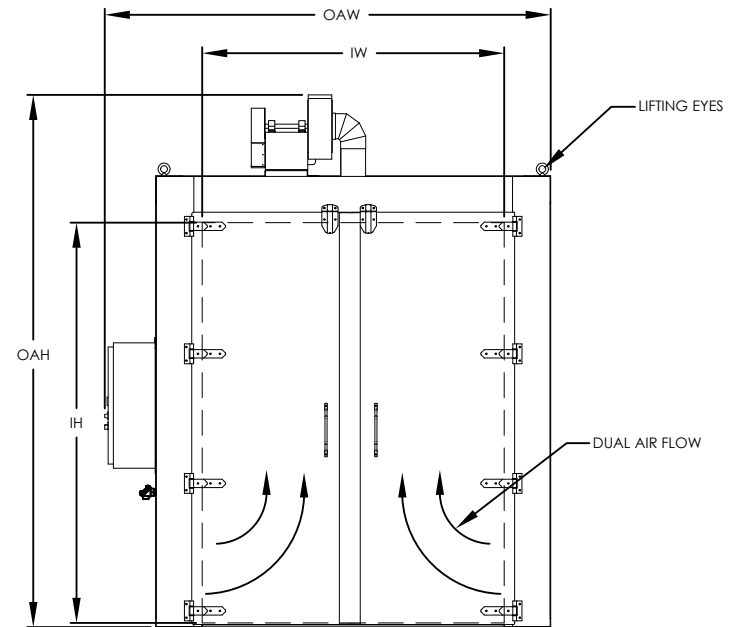


**Enhanced Walk-In Oven, Rear Heater, 800 F, Fuel Fired, Dual Air Flow
NFPA Class B**

Model	Workspace Dimensions			Heat Input	Circulating Blower (CFM)	Exhaust (ACFM)	Ships
	"W	"D	"H				
EWR08FD-48-48-60	48	- 48	- 60	200,000 BTUH	2000	250	Fully Assembled
EWR08FD-48-48-72	48	- 48	- 72	400,000 BTUH	2500	250	Fully Assembled
EWR08FD-48-48-96	48	- 48	- 96	400,000 BTUH	3500	250	Fully Assembled
EWR08FD-48-72-72	48	- 72	- 72	400,000 BTUH	4000	250	Fully Assembled
EWR08FD-48-72-96	48	- 72	- 96	400,000 BTUH	5000	250	Fully Assembled
EWR08FD-48-96-72	48	- 96	- 72	400,000 BTUH	5000	250	Fully Assembled
EWR08FD-48-96-96	48	- 96	- 96	400,000 BTUH	7000	250	Fully Assembled
EWR08FD-60-60-60	60	- 60	- 60	400,000 BTUH	3500	250	Fully Assembled
EWR08FD-60-60-72	60	- 60	- 72	400,000 BTUH	4000	250	Fully Assembled
EWR08FD-60-60-96	60	- 60	- 96	400,000 BTUH	5000	250	Fully Assembled
EWR08FD-60-72-72	60	- 72	- 72	400,000 BTUH	4500	250	Fully Assembled
EWR08FD-60-72-96	60	- 72	- 96	400,000 BTUH	6000	250	Fully Assembled
EWR08FD-60-96-96	60	- 96	- 96	700,000 BTUH	8000	250	Fully Assembled
EWR08FD-72-72-72	72	- 72	- 72	400,000 BTUH	5500	250	Fully Assembled
EWR08FD-72-72-96	72	- 72	- 96	400,000 BTUH	8000	250	Fully Assembled
EWR08FD-72-96-96	72	- 96	- 96	700,000 BTUH	10000	500	Fully Assembled
EWR08FD-72-120-96	72	- 120	- 96	700,000 BTUH	12000	500	Fully Assembled



MODEL	WORKSPACE DIMENSIONS				OVERALL DIMENSIONS		
	IW	ID	IH	DS	OAW	OAD	OAH
	(in)	(in)	(in)	(in)	(in)	(in)	(in)
EWR08FD-48-48-60	48	48	60	34	79	107	92
EWR08FD-48-48-72	48	48	72	34	79	107	104
EWR08FD-48-48-96	48	48	96	34	79	111	128
EWR08FD-48-72-72	48	72	72	34	79	141	104
EWR08FD-48-72-96	48	72	96	34	79	145	128
EWR08FD-48-96-72	48	96	72	34	79	169	104
EWR08FD-48-96-96	48	96	96	34	79	175	130
EWR08FD-60-60-60	60	60	60	40	91	123	92
EWR08FD-60-60-72	60	60	72	40	91	129	104
EWR08FD-60-60-96	60	60	96	40	91	133	128
EWR08FD-60-72-72	60	72	72	40	91	145	104
EWR08FD-60-72-96	60	72	96	40	91	151	128
EWR08FD-60-96-96	60	96	96	40	91	175	130
EWR08FD-72-72-72	72	72	72	46	103	151	104
EWR08FD-72-72-96	72	72	96	46	103	151	128
EWR08FD-72-96-96	72	96	96	46	105	182	130
EWR08FD-72-120-96	72	120	96	46	107	211	132



THE NATIONAL FIRE PROTECTION ASSOCIATION'S STANDARD NFPA 86 DOCUMENTS GUIDELINES FOR THE SAFE OPERATION OF OVENS AND FURNACES. THIS STANDARD DEFINES AN OVEN OCCASIONED BY THE PRESENCE OF FLAMMABLE VOLATILES OR COMBUSTIBLE MATERIAL AS "CLASS A" AND FURTHER MANDATES SPECIFIC SAFETY EQUIPMENT ON THESE OVENS TO REDUCE THE RISK OF FIRE OR EXPLOSION. SIMILARLY, OVENS OR FURNACES WHEREIN NO FLAMMABLE VOLATILES OR COMBUSTIBLE MATERIALS ARE PRESENT ARE CONSIDERED "CLASS B". IT IS IMPERATIVE THAT THE USER OF HEAT PROCESSING EQUIPMENT BE KNOWLEDGEABLE REGARDING APPLICATION OF THE EQUIPMENT.

MODEL: EWR08FD
 DESCRIPTION: Enhanced Walk-In Oven, Rear Heater, 800 F, Gas, Dual Air Flow
 DRAWING: EWR08FD SALES

LEWCO, INC. IS COMMITTED TO CONTINUOUS IMPROVEMENT AND RESERVES THE RIGHT TO CHANGE DESIGNS AND SPECIFICATIONS WITHOUT NOTICE.
 THIS DRAWING IS CONFIDENTIAL AND MUST NOT BE COPIED, REPRODUCED OR USED FOR ANY PURPOSE WITHOUT THE WRITTEN CONSENT OF LEWCO, INC. ALL RIGHTS RESERVED

DATE 4/30/2014
 REV 001
 PAGE 1 OF 1

