

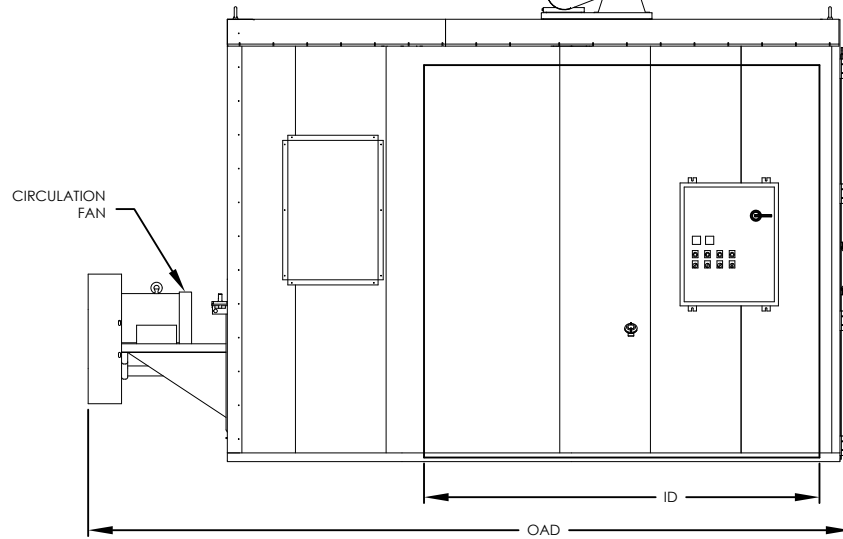
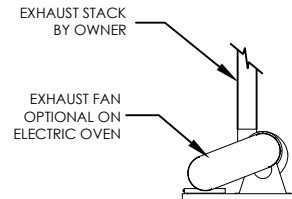
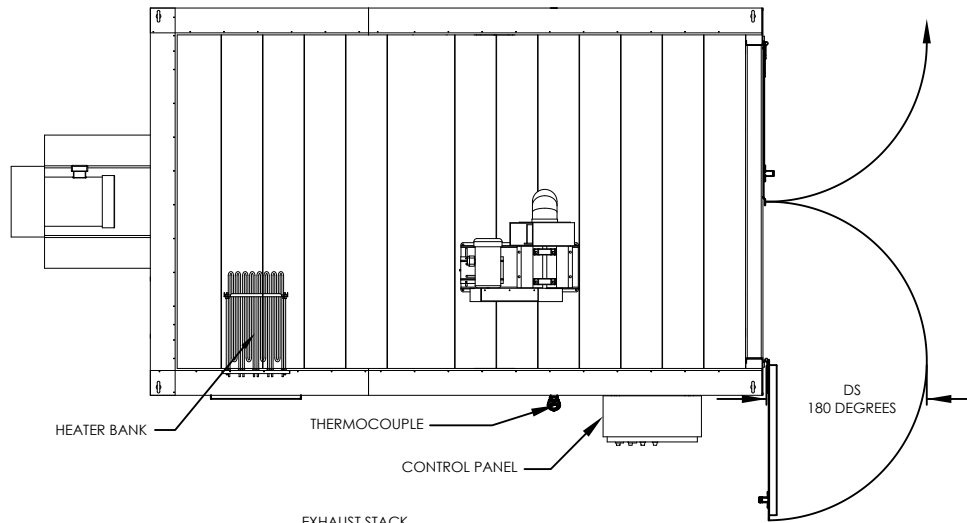


**Enhanced Walk-In Oven, Rear Heater, 650 F, Electric, Horizontal Air Flow
NFPA Class B**

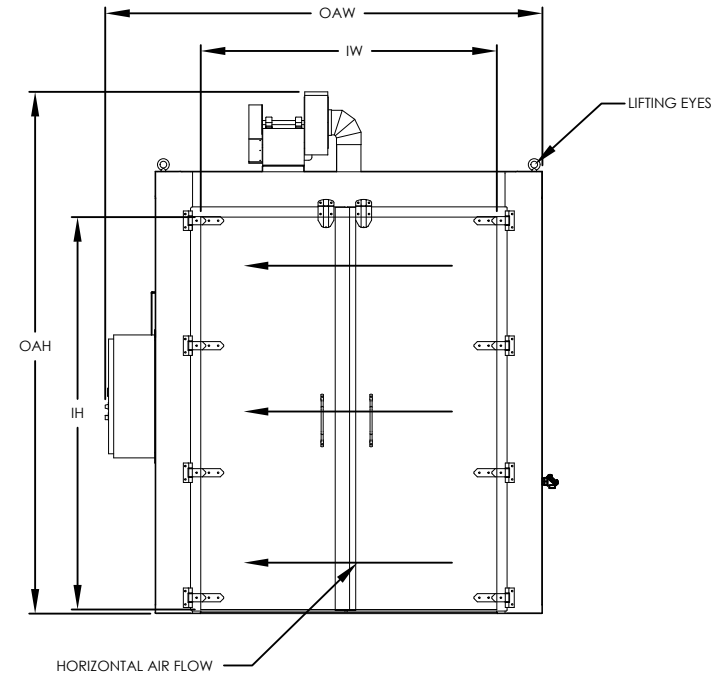
Model	Workspace Dimensions			Heat Input	Circulating Blower (CFM)	Ships
	"W	"D	"H			
EWR06EH-48-48-60	48	48	60	45	2000	Fully Assembled
EWR06EH-48-48-72	48	48	72	54	2500	Fully Assembled
EWR06EH-48-48-96	48	48	96	63	3500	Fully Assembled
EWR06EH-48-72-72	48	72	72	63	4000	Fully Assembled
EWR06EH-48-72-96	48	72	96	72	5000	Fully Assembled
EWR06EH-48-96-72	48	96	72	72	5000	Fully Assembled
EWR06EH-48-96-96	48	96	96	81	7000	Fully Assembled
EWR06EH-60-60-60	60	60	60	54	3500	Fully Assembled
EWR06EH-60-60-72	60	60	72	63	4000	Fully Assembled
EWR06EH-60-60-96	60	60	96	72	5000	Fully Assembled
EWR06EH-60-72-72	60	72	72	63	4500	Fully Assembled
EWR06EH-60-72-96	60	72	96	81	6000	Fully Assembled
EWR06EH-60-96-96	60	96	96	90	8000	Fully Assembled
EWR06EH-72-72-72	72	72	72	72	5500	Fully Assembled
EWR06EH-72-72-96	72	72	96	81	8000	Fully Assembled
EWR06EH-72-96-96	72	96	96	99	10000	Fully Assembled
EWR06EH-72-120-96	72	120	96	108	12000	Fully Assembled

**Enhanced Walk-In Oven, Rear Heater, 650 F, Electric, Horizontal Air Flow
NFPA Class A**

Model	Workspace Dimensions			Heat Input	Circulating Blower (CFM)	Exhaust (ACFM)	Max. Solvent (Gals. / Batch)	Ships
	"W	"D	"H					
EWR06EH-48-48-60	48	48	60	54	2000	62	0.05	Fully Assembled
EWR06EH-48-48-72	48	48	72	63	2500	62	0.05	Fully Assembled
EWR06EH-48-48-96	48	48	96	72	3500	62	0.05	Fully Assembled
EWR06EH-48-72-72	48	72	72	72	4000	62	0.05	Fully Assembled
EWR06EH-48-72-96	48	72	96	81	5000	62	0.05	Fully Assembled
EWR06EH-48-96-72	48	96	72	81	5000	62	0.05	Fully Assembled
EWR06EH-48-96-96	48	96	96	90	7000	62	0.05	Fully Assembled
EWR06EH-60-60-60	60	60	60	63	3500	62	0.05	Fully Assembled
EWR06EH-60-60-72	60	60	72	72	4000	62	0.05	Fully Assembled
EWR06EH-60-60-96	60	60	96	81	5000	62	0.05	Fully Assembled
EWR06EH-60-72-72	60	72	72	72	4500	62	0.05	Fully Assembled
EWR06EH-60-72-96	60	72	96	90	6000	62	0.05	Fully Assembled
EWR06EH-60-96-96	60	96	96	117	8000	100	0.09	Fully Assembled
EWR06EH-72-72-72	72	72	72	81	5500	62	0.05	Fully Assembled
EWR06EH-72-72-96	72	72	96	90	8000	62	0.05	Fully Assembled
EWR06EH-72-96-96	72	96	96	117	10000	100	0.09	Fully Assembled
EWR06EH-72-120-96	72	120	96	153	12000	100	0.09	Fully Assembled



MODEL	WORKSPACE DIMENSIONS				OVERALL DIMENSIONS		
	IW (in)	ID (in)	IH (in)	DS (in)	OAW (in)	OAD (in)	OAH (in)
EWRO6EH-48-48-60	48	48	60	34	79	106	71
EWRO6EH-48-48-72	48	48	72	34	79	106	83
EWRO6EH-48-48-96	48	48	96	34	79	110	107
EWRO6EH-48-72-72	48	72	72	34	79	140	83
EWRO6EH-48-72-96	48	72	96	34	79	140	107
EWRO6EH-48-96-72	48	96	72	34	79	164	83
EWRO6EH-48-96-96	48	96	96	34	79	170	107
EWRO6EH-60-60-60	60	60	60	40	91	122	71
EWRO6EH-60-60-72	60	60	72	40	91	128	83
EWRO6EH-60-60-96	60	60	96	40	91	128	107
EWRO6EH-60-72-72	60	72	72	40	91	140	83
EWRO6EH-60-72-96	60	72	96	40	91	146	107
EWRO6EH-60-96-96	60	96	96	40	91	170	107
EWRO6EH-72-72-72	72	72	72	46	103	146	83
EWRO6EH-72-72-96	72	72	96	46	103	146	107
EWRO6EH-72-96-96	72	96	96	46	105	178	107
EWRO6EH-72-120-96	72	120	96	46	107	206	107



THE NATIONAL FIRE PROTECTION ASSOCIATION'S STANDARD NFPA 86 DOCUMENTS GUIDELINES FOR THE SAFE OPERATION OF OVENS AND FURNACES. THIS STANDARD DEFINES AN OVEN OCCASIONED BY THE PRESENCE OF FLAMMABLE VOLATILES OR COMBUSTIBLE MATERIAL AS "CLASS A" AND FURTHER MANDATES SPECIFIC SAFETY EQUIPMENT ON THESE OVENS TO REDUCE THE RISK OF FIRE OR EXPLOSION. SIMILARLY, OVENS OR FURNACES WHEREIN NO FLAMMABLE VOLATILES OR COMBUSTIBLE MATERIALS ARE PRESENT ARE CONSIDERED "CLASS B". IT IS IMPERATIVE THAT THE USER OF HEAT PROCESSING EQUIPMENT BE KNOWLEDGEABLE REGARDING APPLICATION OF THE EQUIPMENT.

MODEL: EWR06EH
 DESCRIPTION: Enhanced Walk-In Oven, Rear Heater, 650 F, Electric, Horizontal Air Flow
 DRAWING: EWR06EH SALES

LEWCO, INC. IS COMMITTED TO CONTINUOUS IMPROVEMENT AND RESERVES THE RIGHT TO CHANGE DESIGNS AND SPECIFICATIONS WITHOUT NOTICE.
 THIS DRAWING IS CONFIDENTIAL AND MUST NOT BE COPIED, REPRODUCED OR USED FOR ANY PURPOSE WITHOUT THE WRITTEN CONSENT OF LEWCO, INC. ALL RIGHTS RESERVED.

DATE 4/30/2014
 REV 001
 PAGE 1 OF 1

