

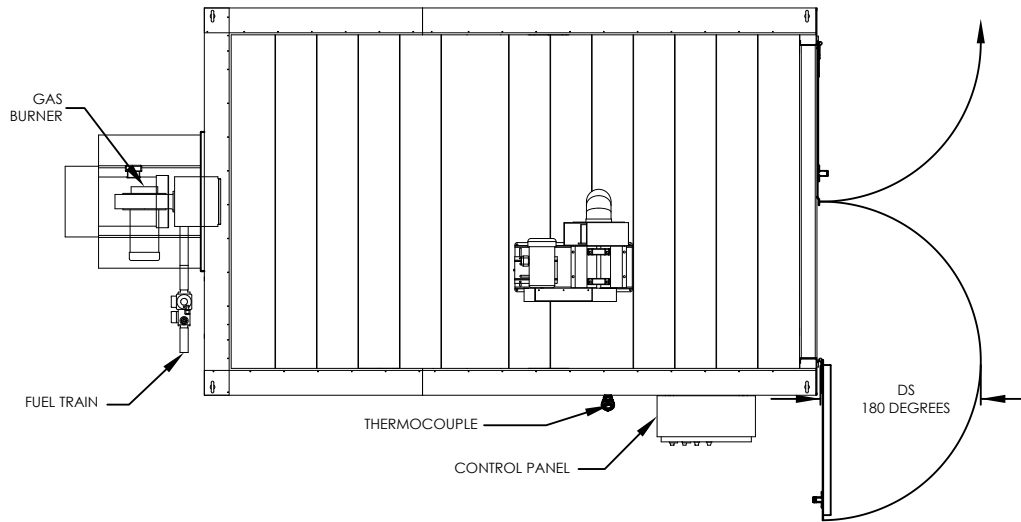


**Enhanced Walk-In Oven, Rear Heater, 350 F, Fuel Fired, Horizontal Air Flow  
NFPA Class B**

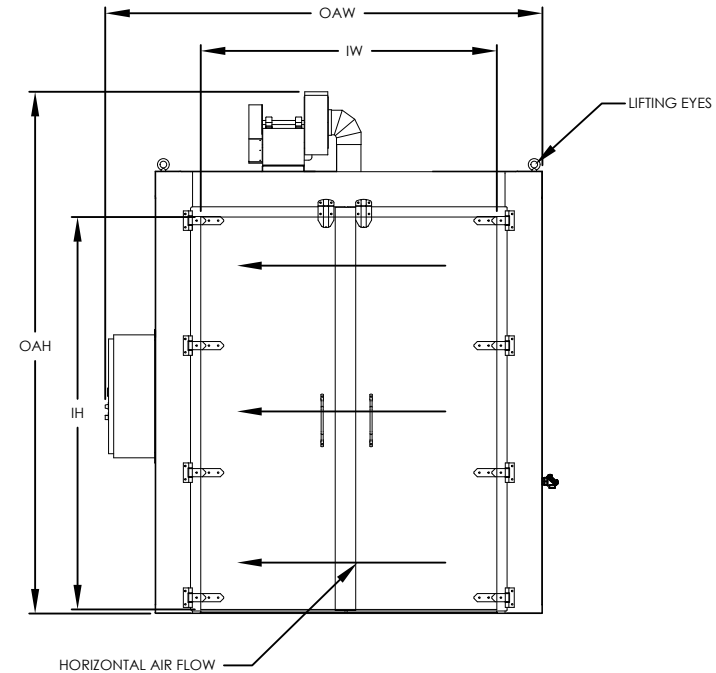
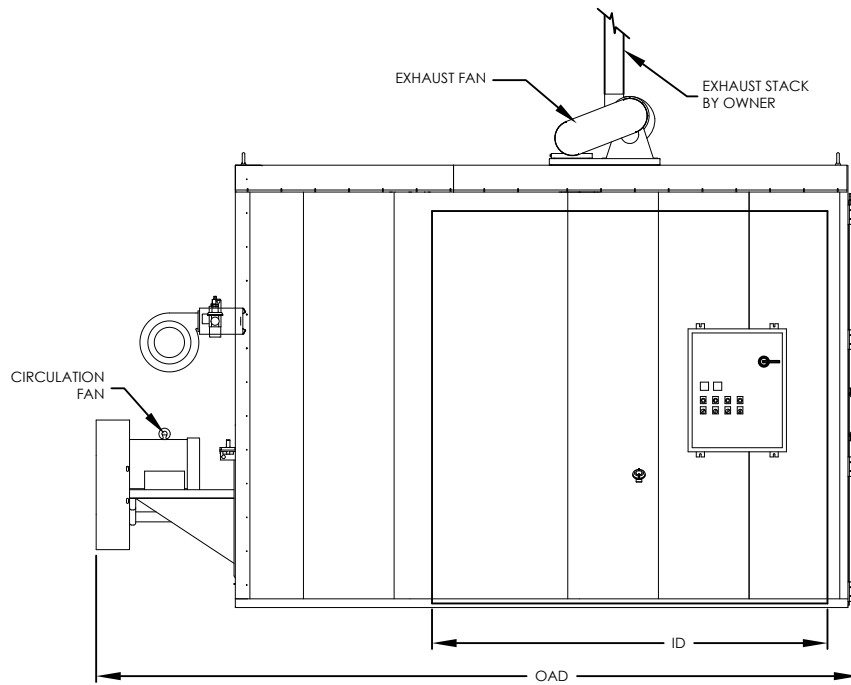
Model	Workspace Dimensions			Heat Input	Circulating Blower (CFM)	Exhaust (ACFM)	Ships
	"W	"D	"H				
EWR03FH-48-48-60	48	- 48	- 60	200,000 BTUH	1700	100	Fully Assembled
EWR03FH-48-48-72	48	- 48	- 72	200,000 BTUH	2000	100	Fully Assembled
EWR03FH-48-48-96	48	- 48	- 96	200,000 BTUH	2500	100	Fully Assembled
EWR03FH-48-72-72	48	- 72	- 72	200,000 BTUH	3000	100	Fully Assembled
EWR03FH-48-72-96	48	- 72	- 96	200,000 BTUH	4000	100	Fully Assembled
EWR03FH-48-96-72	48	- 96	- 72	200,000 BTUH	4000	100	Fully Assembled
EWR03FH-48-96-96	48	- 96	- 96	200,000 BTUH	5000	100	Fully Assembled
EWR03FH-60-60-60	60	- 60	- 60	200,000 BTUH	2500	100	Fully Assembled
EWR03FH-60-60-72	60	- 60	- 72	200,000 BTUH	3000	100	Fully Assembled
EWR03FH-60-60-96	60	- 60	- 96	200,000 BTUH	4000	100	Fully Assembled
EWR03FH-60-72-72	60	- 72	- 72	200,000 BTUH	3500	100	Fully Assembled
EWR03FH-60-72-96	60	- 72	- 96	200,000 BTUH	4500	100	Fully Assembled
EWR03FH-60-96-96	60	- 96	- 96	200,000 BTUH	6000	250	Fully Assembled
EWR03FH-72-72-72	72	- 72	- 72	200,000 BTUH	4000	100	Fully Assembled
EWR03FH-72-72-96	72	- 72	- 96	200,000 BTUH	5500	100	Fully Assembled
EWR03FH-72-96-96	72	- 96	- 96	200,000 BTUH	8000	250	Fully Assembled

**Enhanced Walk-In Oven, Rear Heater, 350 F, Fuel Fired, Horizontal Air Flow  
NFPA Class A**

Model	Workspace Dimensions			Heat Input	Circulating Blower (CFM)	Exhaust (ACFM)	Max. Solvent (Gals. / Batch)	Ships
	"W	"D	"H					
EWR03FH-48-48-60	48	- 48	- 60	200,000 BTUH	1700	250	0.14	Fully Assembled
EWR03FH-48-48-72	48	- 48	- 72	200,000 BTUH	2000	250	0.14	Fully Assembled
EWR03FH-48-48-96	48	- 48	- 96	200,000 BTUH	2500	250	0.14	Fully Assembled
EWR03FH-48-72-72	48	- 72	- 72	200,000 BTUH	3000	250	0.14	Fully Assembled
EWR03FH-48-72-96	48	- 72	- 96	200,000 BTUH	4000	250	0.14	Fully Assembled
EWR03FH-48-96-72	48	- 96	- 72	200,000 BTUH	4000	250	0.14	Fully Assembled
EWR03FH-48-96-96	48	- 96	- 96	200,000 BTUH	5000	250	0.14	Fully Assembled
EWR03FH-60-60-60	60	- 60	- 60	200,000 BTUH	2500	250	0.14	Fully Assembled
EWR03FH-60-60-72	60	- 60	- 72	200,000 BTUH	3000	250	0.14	Fully Assembled
EWR03FH-60-60-96	60	- 60	- 96	200,000 BTUH	4000	250	0.14	Fully Assembled
EWR03FH-60-72-72	60	- 72	- 72	200,000 BTUH	3500	250	0.14	Fully Assembled
EWR03FH-60-72-96	60	- 72	- 96	200,000 BTUH	4500	250	0.14	Fully Assembled
EWR03FH-60-96-96	60	- 96	- 96	200,000 BTUH	6000	500	0.28	Fully Assembled
EWR03FH-72-72-72	72	- 72	- 72	200,000 BTUH	4000	250	0.14	Fully Assembled
EWR03FH-72-72-96	72	- 72	- 96	200,000 BTUH	5500	250	0.14	Fully Assembled
EWR03FH-72-96-96	72	- 96	- 96	200,000 BTUH	8000	500	0.28	Fully Assembled



MODEL	WORKSPACE DIMENSIONS				OVERALL DIMENSIONS		
	IW	ID	IH	DS	OAW	OAD	OAH
	(in)	(in)	(in)	(in)	(in)	(in)	(in)
EWRO3FH-48-48-60	48	48	60	34	78	105	87
EWRO3FH-48-48-72	48	48	72	34	78	105	99
EWRO3FH-48-48-96	48	48	96	34	78	105	123
EWRO3FH-48-72-72	48	72	72	34	78	133	99
EWRO3FH-48-72-96	48	72	96	34	78	133	123
EWRO3FH-48-96-72	48	96	72	34	78	157	99
EWRO3FH-48-96-96	48	96	96	34	78	167	123
EWRO3FH-60-60-60	60	60	60	40	90	117	87
EWRO3FH-60-60-72	60	60	72	40	90	121	99
EWRO3FH-60-60-96	60	60	96	40	90	127	123
EWRO3FH-60-72-72	60	72	72	40	90	133	99
EWRO3FH-60-72-96	60	72	96	40	90	143	123
EWRO3FH-60-96-96	60	96	96	40	90	173	123
EWRO3FH-72-72-72	72	72	72	46	102	139	99
EWRO3FH-72-72-96	72	72	96	46	102	149	123
EWRO3FH-72-96-96	72	96	96	46	104	173	123



THE NATIONAL FIRE PROTECTION ASSOCIATION'S STANDARD NFPA 86 DOCUMENTS GUIDELINES FOR THE SAFE OPERATION OF OVENS AND FURNACES. THIS STANDARD DEFINES AN OVEN OCCASIONED BY THE PRESENCE OF FLAMMABLE VOLATILES OR COMBUSTIBLE MATERIAL AS "CLASS A" AND FURTHER MANDATES SPECIFIC SAFETY EQUIPMENT ON THESE OVENS TO REDUCE THE RISK OF FIRE OR EXPLOSION. SIMILARLY, OVENS OR FURNACES WHEREIN NO FLAMMABLE VOLATILES OR COMBUSTIBLE MATERIALS ARE PRESENT ARE CONSIDERED "CLASS B". IT IS IMPERATIVE THAT THE USER OF HEAT PROCESSING EQUIPMENT BE KNOWLEDGEABLE REGARDING APPLICATION OF THE EQUIPMENT.

MODEL: EWR03FH  
 DESCRIPTION: Enhanced Walk-In Oven, Rear Heater, 350 F, Gas, Horizontal Air Flow  
 DRAWING: EWR03FH SALES

LEWCO, INC. IS COMMITTED TO CONTINUOUS IMPROVEMENT AND RESERVES THE RIGHT TO CHANGE DESIGNS AND SPECIFICATIONS WITHOUT NOTICE.  
 THIS DRAWING IS CONFIDENTIAL AND MUST NOT BE COPIED, REPRODUCED OR USED FOR ANY PURPOSE WITHOUT THE WRITTEN CONSENT OF LEWCO, INC. ALL RIGHTS RESERVED.

DATE 4/28/2014  
 REV 001  
 PAGE 1 OF 1

