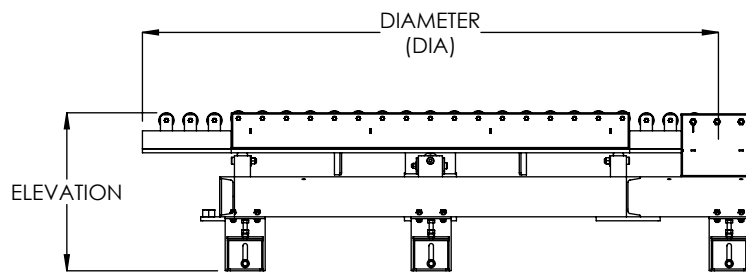
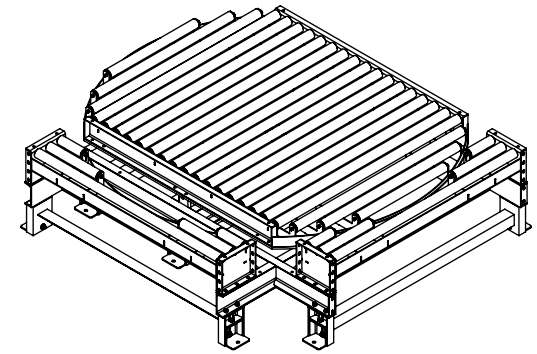
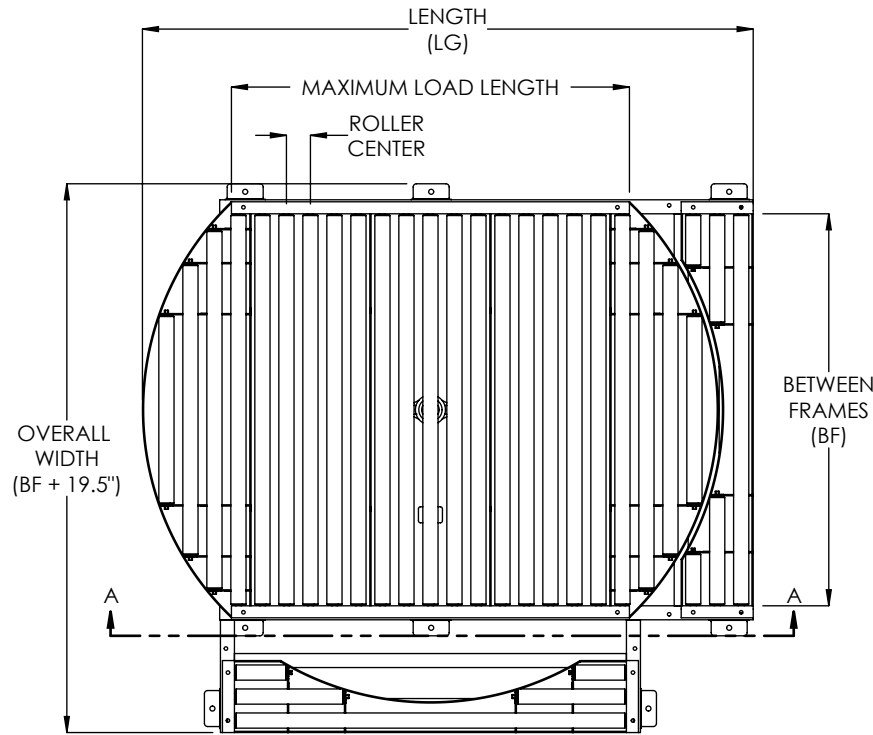


LOAD CAPACITY: 2000 LB MAXIMUM LOAD DISTRIBUTED ON CONVEYOR.



SECTION A-A

BETWEEN FRAMES (IN)	DIAMETER (IN)	MAXIMUM LOAD LENGTH (IN)
27	42	24
33	50	32
39	58	36
45	70	44
51	74	48

SPECIFICATIONS

BETWEEN FRAMES: 27", 33", 39", 45", 51"

ELEVATION: 13.0" - 36.0"

ROTATION: 360 degrees with spring loaded detents at 90 degree increments.

ROLLER CENTERS: 4"

ROLLERS: 1.9" diameter, 12ga wall tube with precision grease packed bearings or 1.9" diameter, 9ga wall tube with semi-precision grease packed bearings. All rollers with 7/16" hex cold rolled steel axles, spring retained.

TURNTABLE PLATE: Standard is 1/2" plate with slewing ring center bearing.

ROLL COVERS: Optional orange polyurethane, 1/8" wall. Galvanized tube available for 12ga roller.

TRANSITION ROLLERS: Standard set for pass through conveyor line. Optional transition section can be configured for 90° turns.

FRAME FINISH: Standard finish is OSHA safety blue powder. Optional colors include green, beige, gray, orange, black and yellow.

Model: NPTG19 - Non-Powered Turntable with 1900 Series Gravity Conveyor

REV

0

