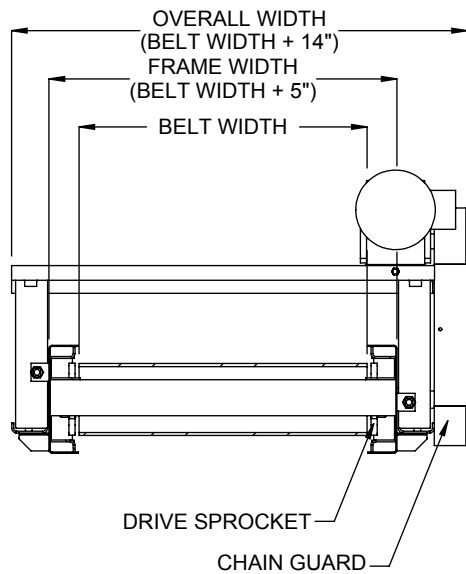
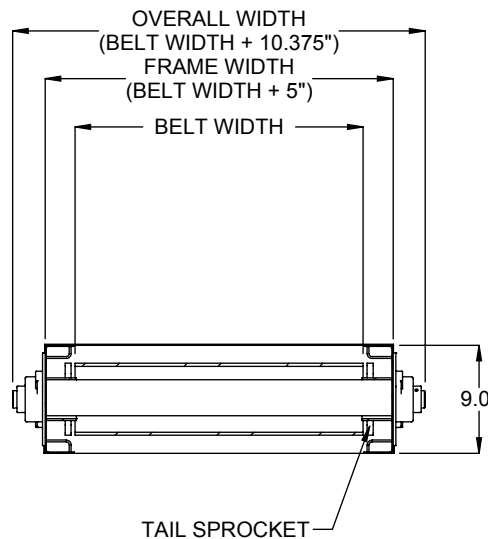


**END DRIVE, OVERHEAD, RIGHT HAND SIDE
SHBZ - Steel Hinged Belt Conveyor, Z Shape**



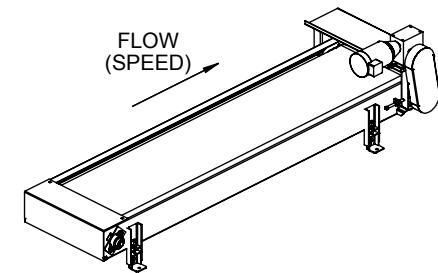
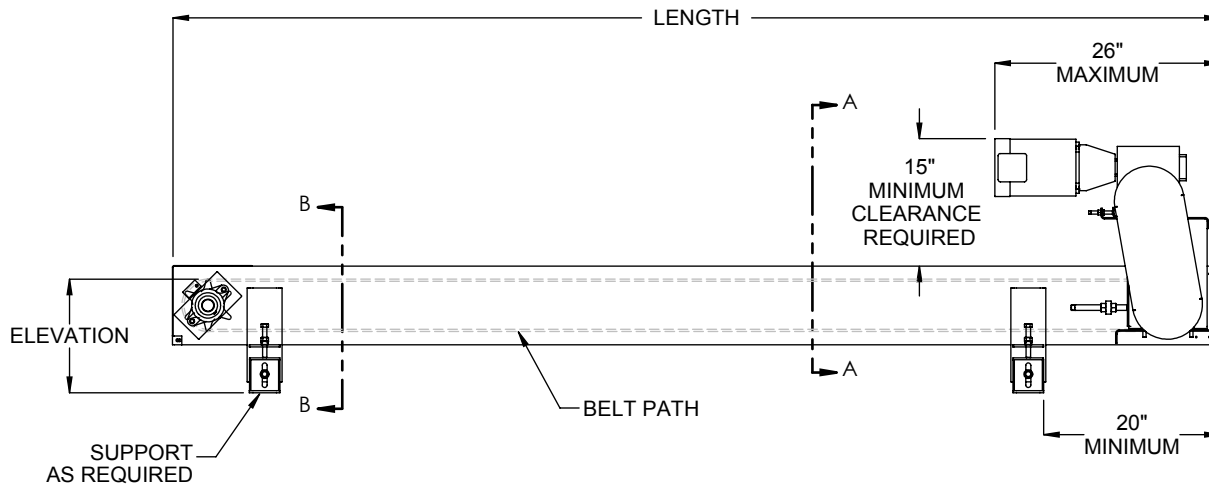
**SECTION A-A
DRIVE END**



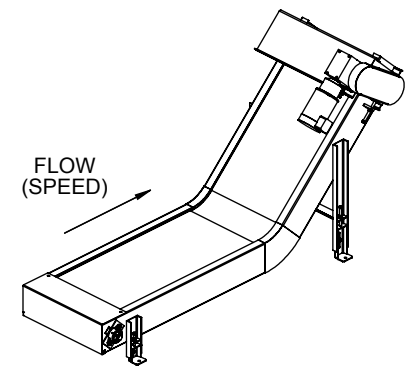
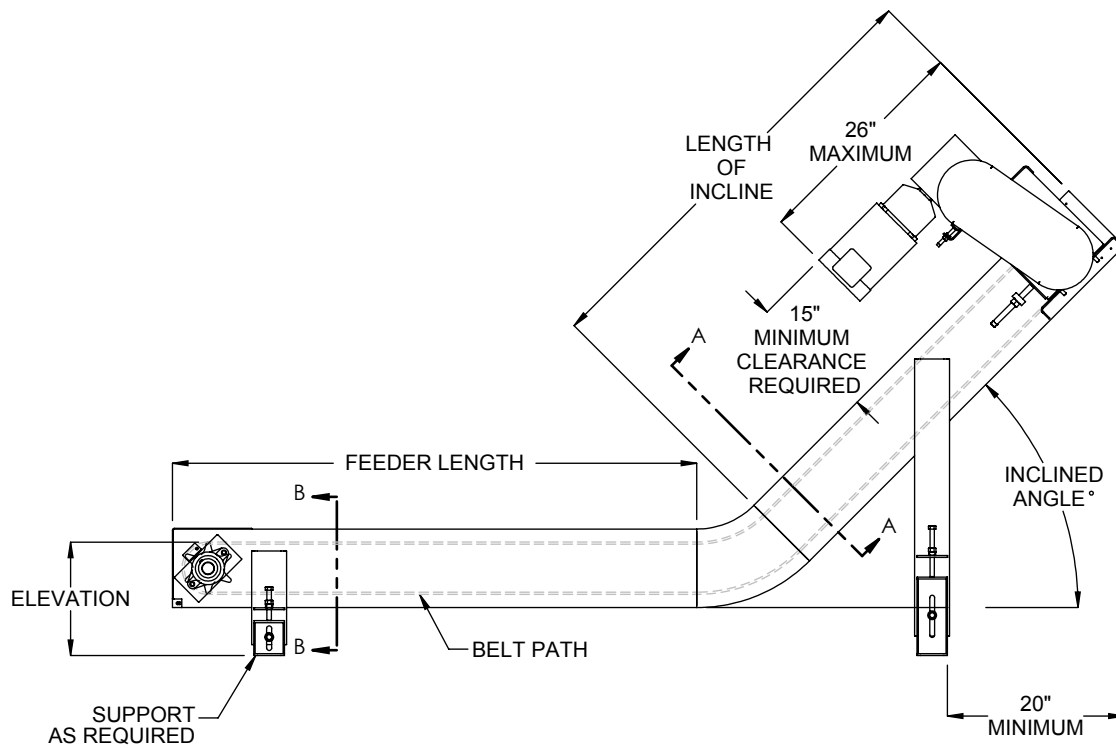
**SECTION B-B
TAIL END**

SPECIFICATIONS	
BELT WIDTH: 8" - 36"	
BEGINNING ELEVATION: 8" - 48"	LENGTH OF INCLINE: 52" - 324"
ENDING ELEVATION: 36" - 126"	SPEED: 10 - 45 FPM
INCLINED ANGLE: 30°, 45°, 60°	FEEDER LENGTH: 12" - 120"
NOSEOVER LENGTH: 15" - 120"	
BELT: Standard is 2-1/2" pitch steel hinge, dimpled, standard chain with outer side bars. <u>Optional</u> belts are dimpled or perforated, with or without outer side bars. <u>Optional</u> 1-1/2" steel cleats at various center distances are available.	
DRIVE: <u>Standard</u> drive is end drive, overhead, right hand side.	
MOTOR: 1/2 HP through 1 HP. Energy efficient, inverter duty and brake motors also available. Voltages include 120/1/60, 230/3/60, 460/3/60 and 575/3/60 & DC Voltage.	
SUPPORT CENTERS: <u>Standard</u> supports are on nominal 10' centers.	
FRAME FINISH: Standard finish is OSHA safety blue powder. <u>Optional</u> colors include green, beige, gray, orange, black and yellow.	

Model: SHBH, SHBL, SHBZ - Steel Hinged Belt Conveyor



END DRIVE, OVERHEAD, RIGHT HAND SIDE SHBH - Steel Hinged Belt Conveyor, Horizontal



END DRIVE, OVERHEAD, RIGHT HAND SIDE SHBL - Steel Hinged Belt Conveyor, L Shape