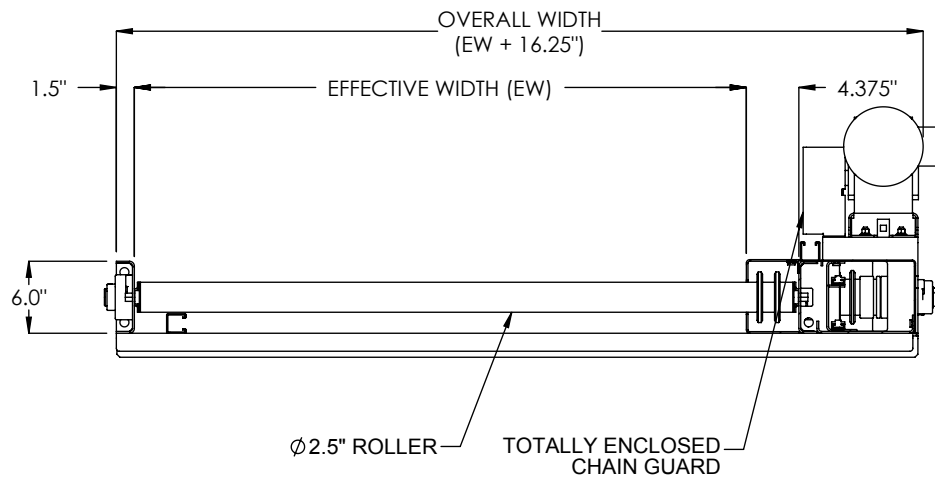


**DRIVE MOUNTED HIGH**



**SECTION A-A  
DRIVE MOUNTED HIGH**

<b>SPECIFICATIONS</b>	
<b>EFFECTIVE WIDTH:</b> 12" - 60"	
<b>BEGINNING ELEVATION:</b> 7" - 120"	<b>LENGTH:</b> 72" - 900"
<b>ENDING ELEVATION:</b> 7" - 120"	<b>SPEED:</b> 10 - 60 FPM
<b>ROLLER CENTERS:</b> 4.5", 6"	
<b>ZONE LENGTH:</b> 36", 42", 45", 48", 54", 60", 63", 66", 72"	
<b>DRIVE:</b> Standard drive is mounted high near end of conveyor length on chainbox side. <u>Optional</u> drives include drive mounted low near end.	
<b>FRAME:</b> Standard frame includes 6" formed channel on both chain box side and opposite side with roller set low in frame. <u>Optional</u> frame include 6" structural channel on both sides with roller set low in the frame.	
<b>MOTOR:</b> 1/2 HP through 2 HP. Energy efficient and inverter duty motors also available. Voltages include 120/1/60, 230/3/60, 460/3/60 and 575/3/60 & DC Voltage.	
<b>ROLLER BEARING:</b> Precision, grease packed bearings, 11/16" hexagon axles.	
<b>ROLLER COVERS:</b> <u>Standard</u> roller surface is carbon steel. <u>Optional</u> roller covers for 2.5" rollers includes galvanized roller tube, polyurethane roller sleeves, Ultrax accumulation sleeves.	
<b>SUPPORT CENTERS:</b> <u>Standard</u> supports are floor supports on 5' center.	
<b>FRAME FINISH:</b> Standard finish is OSHA safety blue powder. <u>Optional</u> colors include green, beige, gray, orange, black and yellow.	

**Model:** CDZA25, CDZA26 - Chain Driven Live Roller Zone Accumulation Conveyor

REV  
0



**LOAD CAPACITY @ 60 FPM (LBS)  
CENTER DRIVE, 6" ROLLER CENTERS, 20 FT LENGTH**

HP	WIDTH		
	12"	36"	60"
1/2	1550	1300	1050
3/4	2500	2250	2000
1	4100	3850	3600
1 1/2	6300	6050	5850
2	10300	10100	9850

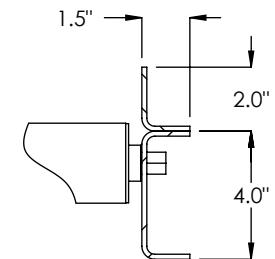
**LOAD CAPACITY @ 30 FPM (LBS)  
CENTER DRIVE, 6" ROLLER CENTERS, 20 FT LENGTH**

HP	WIDTH		
	12"	36"	60"
1/2	3500	3900	3650
3/4	6350	6100	5850
1	10350	10100	9850
1 1/2	15650	15450	15200
2	21000	20750	20500

**RECOMMENDED MAXIMUM CONVEYOR LOAD IS 1000 LBS PER LINEAR FOOT - NOT TO EXCEED CAPACITY ABOVE. FOR HEAVIER LOADS, CONSULT FACTORY.**

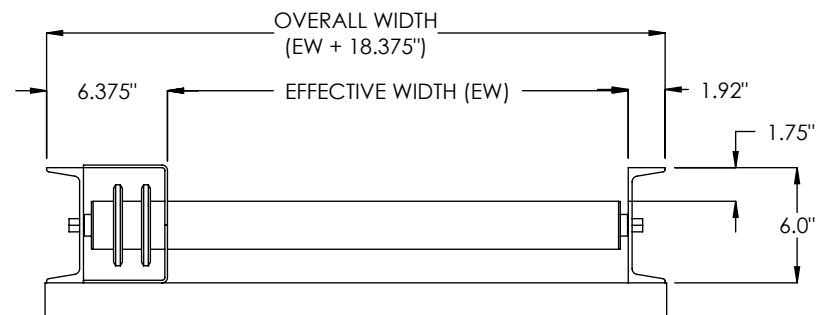
**\* HP requirements will vary for different drive options, conveyor lengths, roller centers, pallet types and chain lubrication conditions. Consult factory.**

**GUARDRAIL OPTION**



2" x 1-1/2" x 8ga  
BOLT ON CHANNEL

FRAME OPTIONS:



F64 CHANNEL, 6 x 1-1/2 x 12ga