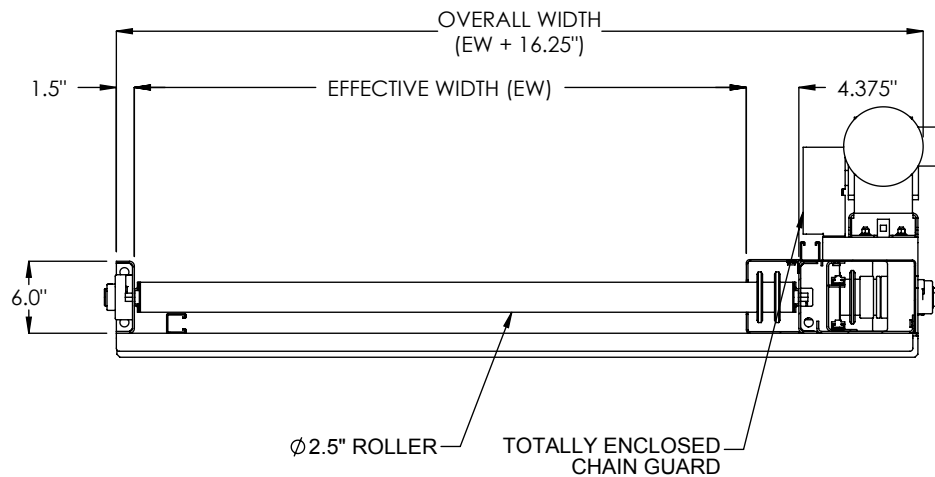


DRIVE MOUNTED HIGH



**SECTION A-A
DRIVE MOUNTED HIGH**

SPECIFICATIONS

EFFECTIVE WIDTH: 12" - 60"

BEGINNING ELEVATION: 7" - 120"

LENGTH: 72" - 900"

ENDING ELEVATION: 7" - 120"

SPEED: 10 - 60 FPM

ROLLER CENTERS: 4.5", 6"

ZONE LENGTH: 36", 42", 45", 48", 54", 60", 63", 66", 72"

DRIVE: Standard drive is mounted high near end of conveyor length on chainbox side. Optional drives include drive mounted low near end.

FRAME: Standard frame includes 6" formed channel on both chain box side and opposite side with roller set low in frame. Optional frame include 6" structural channel on both sides with roller set low in the frame.

MOTOR: 1/2 HP through 2 HP. Energy efficient and inverter duty motors also available. Voltages include 120/1/60, 230/3/60, 460/3/60 and 575/3/60 & DC Voltage.

ROLLER BEARING: Precision, grease packed bearings, 11/16" hexagon axles.

ROLLER COVERS: Standard roller surface is carbon steel. Optional roller covers for 2.5" rollers includes galvanized roller tube, polyurethane roller sleeves, Ultrax accumulation sleeves.

SUPPORT CENTERS: Standard supports are floor supports on 5' center.

FRAME FINISH: Standard finish is OSHA safety blue powder. Optional colors include green, beige, gray, orange, black and yellow.

Model: CDZA25, CDZA26 - Chain Driven Live Roller Zone Accumulation Conveyor

REV

0



**LOAD CAPACITY @ 60 FPM (LBS)
CENTER DRIVE, 6" ROLLER CENTERS, 20 FT LENGTH**

HP	WIDTH		
	12"	36"	60"
1/2	1550	1300	1050
3/4	2500	2250	2000
1	4100	3850	3600
1 1/2	6300	6050	5850
2	10300	10100	9850

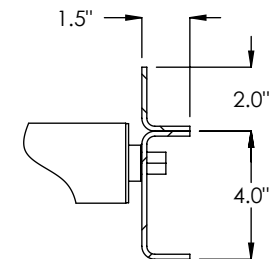
**LOAD CAPACITY @ 30 FPM (LBS)
CENTER DRIVE, 6" ROLLER CENTERS, 20 FT LENGTH**

HP	WIDTH		
	12"	36"	60"
1/2	3500	3900	3650
3/4	6350	6100	5850
1	10350	10100	9850
1 1/2	15650	15450	15200
2	21000	20750	20500

RECOMMENDED MAXIMUM CONVEYOR LOAD IS 1000 LBS PER LINEAR FOOT - NOT TO EXCEED CAPACITY ABOVE. FOR HEAVIER LOADS, CONSULT FACTORY.

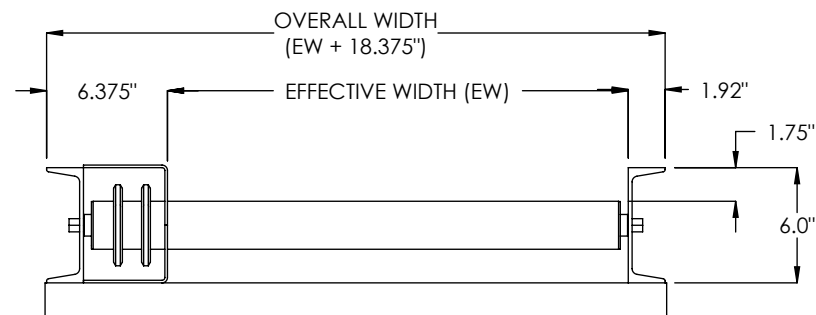
*** HP requirements will vary for different drive options, conveyor lengths, roller centers, pallet types and chain lubrication conditions. Consult factory.**

GUARDRAIL OPTION



2" x 1-1/2" x 8ga
BOLT ON CHANNEL

FRAME OPTIONS:



F64 CHANNEL, 6 x 1-1/2 x 12ga