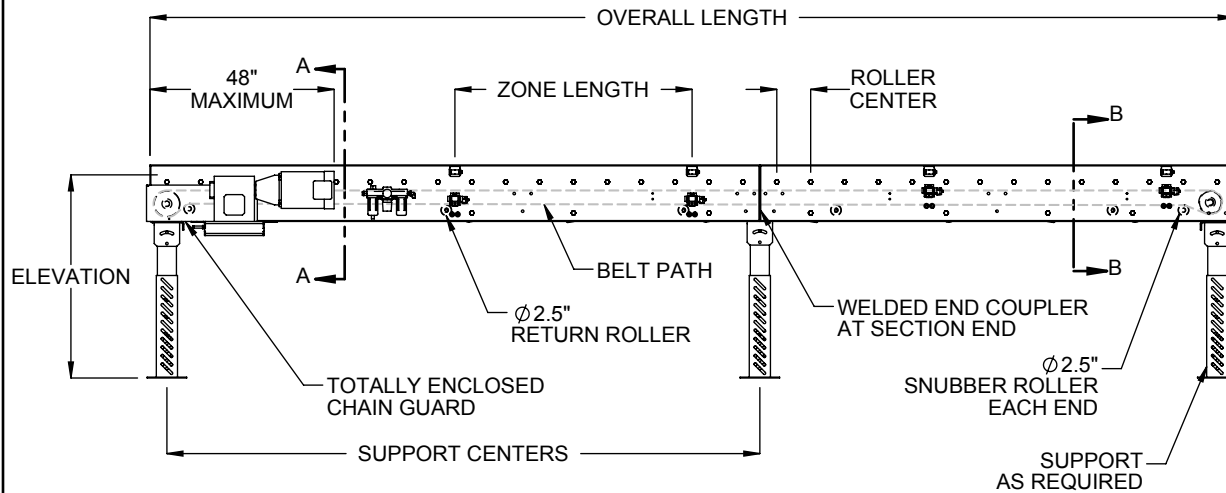


END DRIVE, RIGHT HAND SIDE (SHOWN)
LEFT HAND SIDE OPPOSITE AS SHOWN



SPECIFICATIONS

BETWEEN FRAMES: 15" - 57"

BEGINNING ELEVATION: 12" - 108"

LENGTH: 72" - 960"

ENDING ELEVATION: 12" - 108"

SPEED: 10 - 120 FPM

ROLLER CENTERS: 3", 4", 6"

ROLLERS: ZPLR25 Roller - 2.50" diameter, 11ga wall tubes. ZPLR26 Roller - 2.625" diameter, 7ga wall tubes. All rollers with 11/16" hex cold rolled steel axles, spring retained. Standard bearings are precision, grease packed bearings.

BELT: Standard belt is Trackmate PVC120 with clipper lace.

DRIVE: Standard drive is end, right hand side. Optional drives include End drive left hand side or Center drive right hand side

MOTOR: 1/2 HP through 1-1/2 HP. Energy efficient and inverter duty motors also available. Voltages include 115/1/60, 208/3/60, 230/3/60, 460/3/60 and 575/3/60 & DC Voltage.

ROLLER SURFACE: Standard roller surface is carbon steel. Optional surface for 2.5" rollers includes galvanized roller tube.

SUPPORT CENTERS: Standard supports are floor supports on 10' centers. Optional supports on 5' centers. Ceiling supports are also available.

FRAME FINISH: Standard finish is OSHA safety blue powder. Optional colors include green, beige, gray, orange, black and yellow.

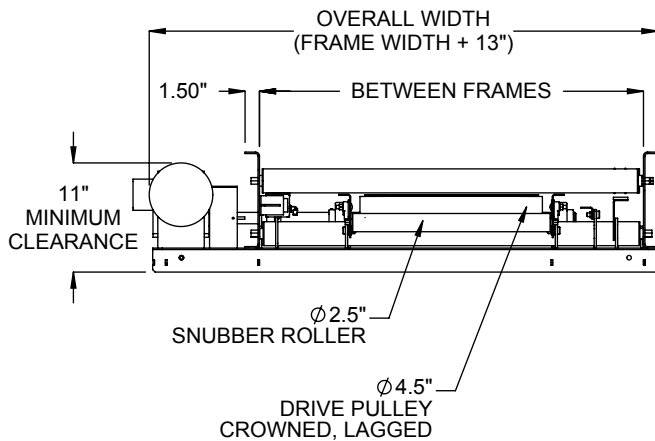
ACCUMULATION ZONES: Zone length is a multiple of roller center. Recommended zone length is 12" longer than longest product length. Standard zone logic is for cascading accumulation.

TREAD ROLLER BRAKE: Friction type brake is actuated automatically with zone actuation to prevent coasting of product in the accumulation zones.

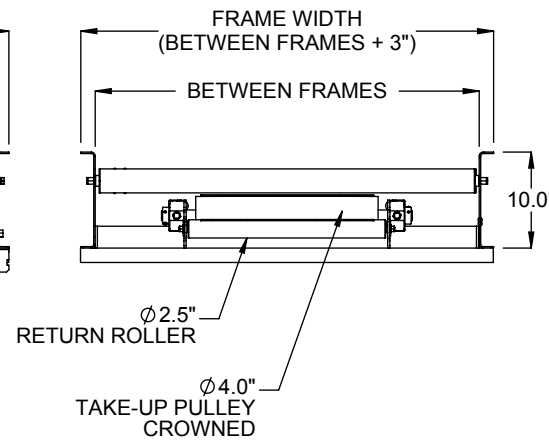
AIR REQUIREMENTS: Requires 40PSI air pressure of clean, filtered air at consumption of approximately 0.05 cubic feet per sensor actuation.

FILTER REGULATOR: Supplied for main air supply at input, 3/8" NPT port.

POWER SUPPLY: Includes 24 VDC power supply located near center of conveyor and capable of supplying power for up to 50 zones.



SECTION A-A
DRIVE END



SECTION B-B
TAKE-UP END
TYP ALL DRIVES

Model: ZPLR25, ZPLR26 - Zero Pressure Live Roller Conveyor

REV
0

