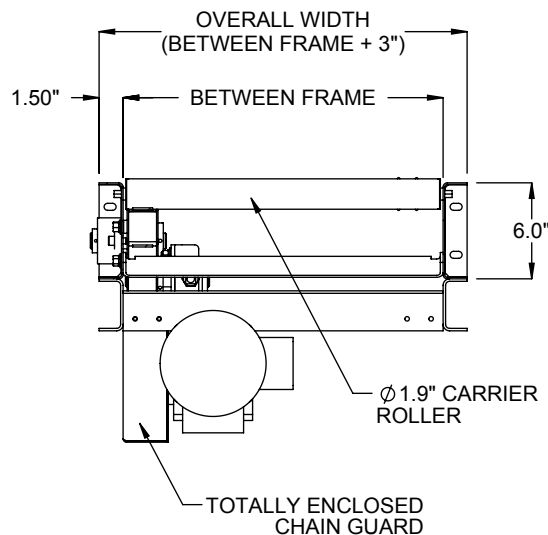
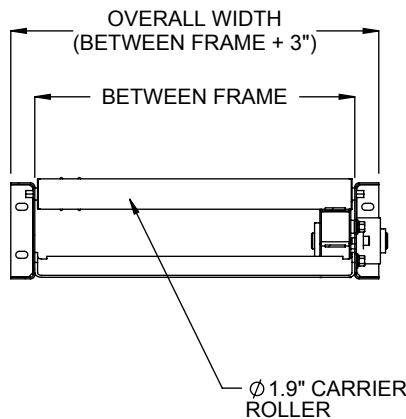


CENTER DRIVE, RIGHT HAND SIDE (SHOWN)



SECTION A-A  
TAKE-UP END



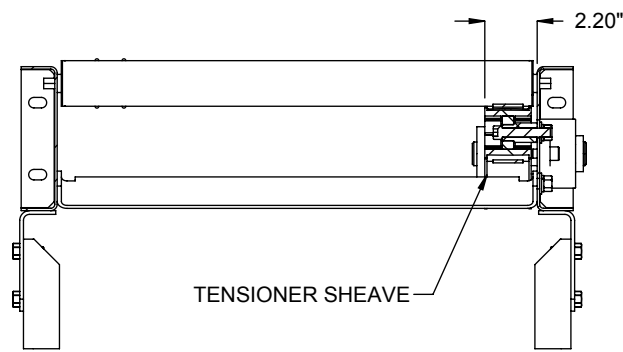
SECTION B-B  
DRIVE END

SPECIFICATIONS	
<b>BETWEEN FRAMES:</b> 13" - 39"	
<b>BEGINNING ELEVATION:</b> 18" - 72"	<b>LENGTH:</b> 60" - 480"
<b>ENDING ELEVATION:</b> 18" - 72"	<b>SPEED:</b> 30, 40, 50, 60, 90, 200 FPM
<b>ROLLER CENTERS:</b> 3", 4", 6"	
<b>BELT:</b> 1-1/4" wide 3 ply power transmission belt with polyester traction top cover.	
<b>DRIVE:</b> Standard drive is center drive, right.	
<b>MOTOR:</b> 1/2 HP, Energy efficient and inverter duty motors also available. Voltages include 120/1/60, 230/3/60, 460/3/60 and 575/3/60 & DC Voltage.	
<b>ROLLER:</b> 1.9" diameter 16 gauge tube with 7/16" hex cold rolled steel axle, spring retained with precision bearings. 1.9" diameter 12 gauge and 9 gauge rollers are available as option.	
<b>MINIMUM PRESSURE ACCUMALATION:</b> Pressure is set by using adjusting pressure idlers as needed to create minimum pressure drive of carrying surface rollers.	
<b>SUPPORT CENTERS:</b> Standard supports are floor supports on 10' centers. Optional ceiling supports are also available.	
<b>FRAME FINISH:</b> Standard finish is OSHA safety blue powder. Optional colors include green, beige, gray, orange, black and yellow.	

Model: BDR19N - Belt Driven Roller, 1900 Series

REV  
0





**SHEAVE VIEW**

**LOAD CAPACITY @ 60 FPM (LBS)  
3" ROLLER CENTERS, 20 FT LENGTH**

HP	WIDTH		
	13"	26"	39"
1/2	350	250	150

**LOAD CAPACITY @ 30 FPM (LBS)  
3" ROLLER CENTERS, 20FT LENGTH**

HP	WIDTH		
	13"	26"	39"
1/2	350	250	150

\* HP requirements will vary for different conveyor widths, lengths, roller centers and speeds. Consult factory.