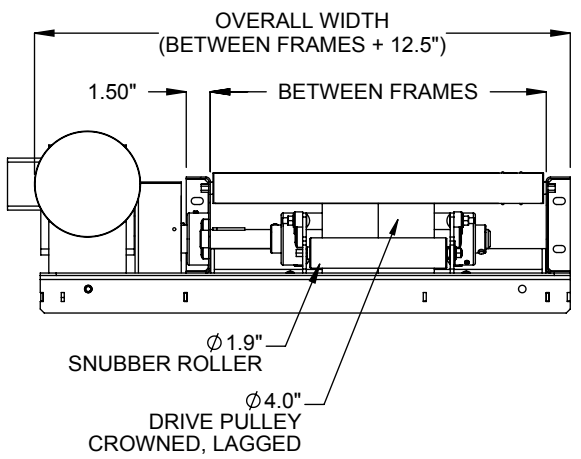
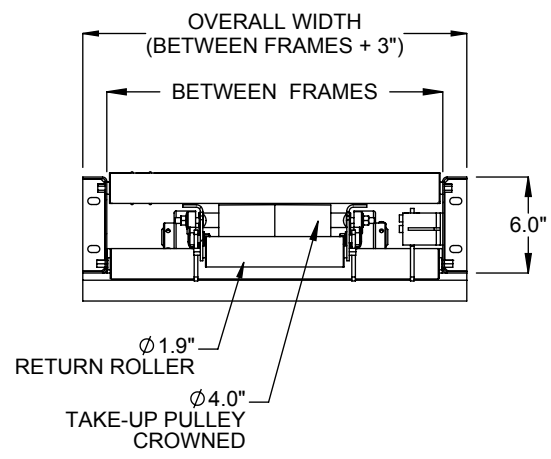


END DRIVE, RIGHT HAND SIDE (SHOWN)
LEFT HAND SIDE OPPOSITE AS SHOWN



SECTION A-A
DRIVE END

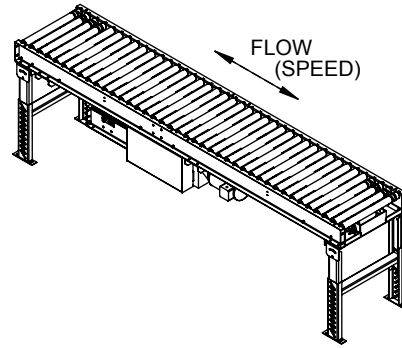


SECTION B-B
TAKE-UP END
TYP ALL DRIVES

SPECIFICATIONS	
BETWEEN FRAMES: 15" - 39"	
BEGINNING ELEVATION: 8.75" - 126"	LENGTH: 60" - 1200"
ENDING ELEVATION: 8.75" - 126"	SPEED: 10 - 200 FPM
ROLLER CENTERS: 3", 4", 6"	
BELT: Standard belt is Trackmate 120 EMB with clipper lace. Optional belts include Trackmate Roughtop, PVC white, Food grade white polyurethane thermoplastic and Slip Top latex belts.	
DRIVE: Standard drive is end, right hand side. Optional drives include End drive left hand side or Center drive right hand side	
MOTOR: 1/2 HP through 1-1/2 HP. Energy efficient and inverter duty motors also available. Voltages include 120/1/60, 230/3/60, 460/3/60 and 575/3/60 & DC Voltage.	
ROLLER COVERS: Optional roller coverings include galvanized roller tube and polyurethane roller sleeves.	
SUPPORT CENTERS: Standard supports are floor supports on 10' centers. Optional supports on 5' centers. Ceiling supports are also available.	
FRAME FINISH: Standard finish is OSHA safety blue powder. Optional colors include green, beige, gray, orange, black and yellow.	

Model: BDLR19 - Belt Driven Live Roller Conveyor

REV	LEWCO
0	



CENTER DRIVE, RIGHT HAND SIDE (SHOWN)

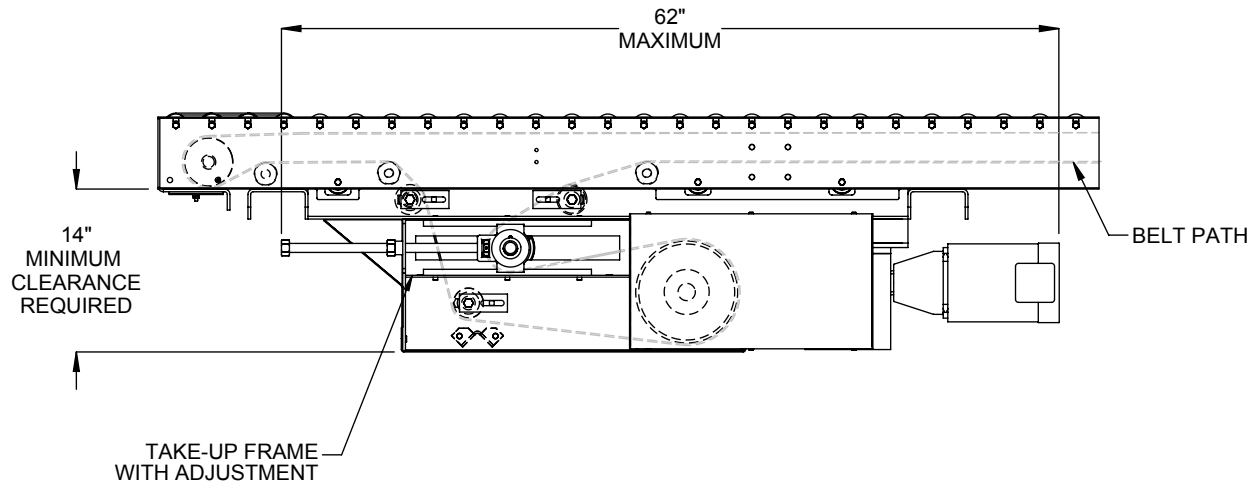
**LOAD CAPACITY @ 60 FPM (LBS)
4" ROLLER CENTERS, 20 FT LENGTH**

HP	WIDTH		
	15"	27"	39"
1/2	500	450	400
3/4	900	850	750
1	1250	1200	1100
1 1/2	1700	1650	1550

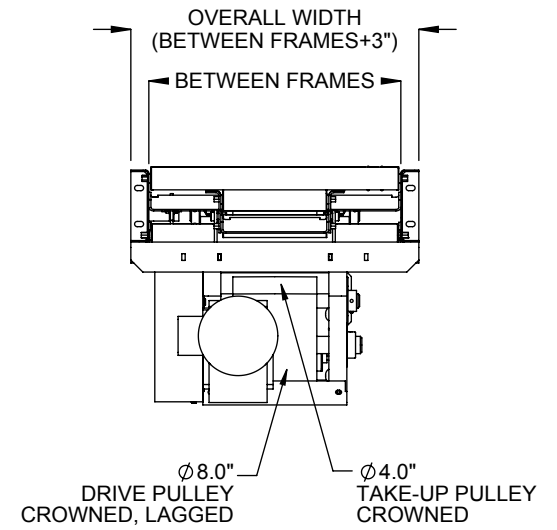
**LOAD CAPACITY @ 30 FPM (LBS)
4" ROLLER CENTERS, 20 FT LENGTH**

HP	WIDTH		
	15"	27"	39"
1/2	1250	1200	1150
3/4	1700	1650	1550
1	1700	1650	1550
1 1/2	1700	1650	1550

**MAXIMUM LOAD PER LINEAR FOOT OF CONVEYOR IS
200 POUNDS - NOT TO EXCEED CAPACITY ABOVE**



CENTER DRIVE OPTION



CENTER DRIVE
END VIEW