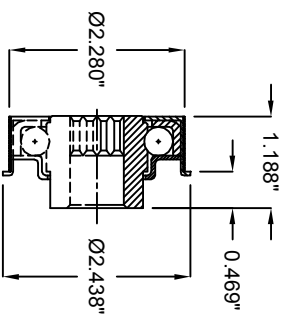
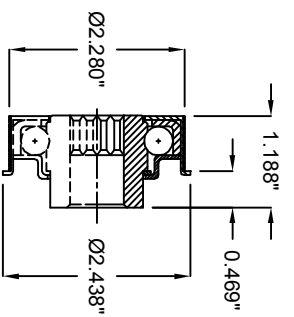


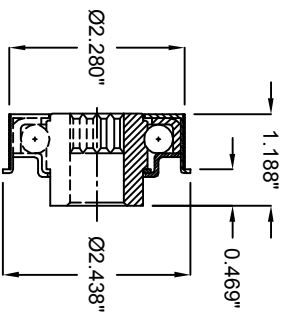
A50 BEARING
 LUBRICATION TYPE: OIL
 LOAD RATING: 425 LBS.
 TEMP. RATING: -20 F TO 140 F
 MAX SPEED: 1200 RPM



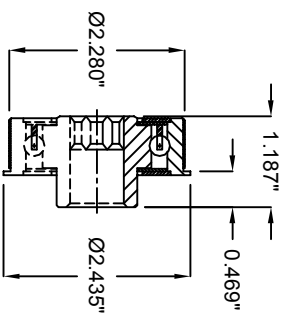
A51 BEARING
 LUBRICATION TYPE: GREASE
 LOAD RATING: 425 LBS.
 TEMP. RATING: -20 F TO 220 F
 MAX SPEED: 1200 RPM



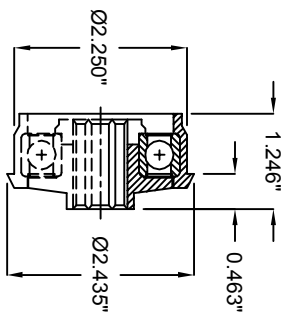
A52 BEARING
 LUBRICATION TYPE: OIL
 LOAD RATING: 425 LBS.
 TEMP. RATING: -20 F TO 140 F
 MAX SPEED: 1200 RPM



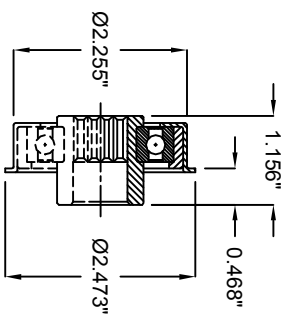
A53 BEARING
 LUBRICATION TYPE: GREASE
 LOAD RATING: 425 LBS.
 TEMP. RATING: -20 F TO 220 F
 MAX SPEED: 1200 RPM



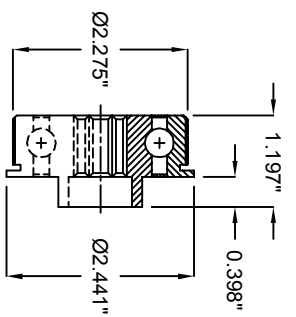
A54 BEARING
 LUBRICATION TYPE: OIL
 LOAD RATING: 1050 LBS.
 TEMP. RATING: -20 F TO 140 F
 MAX SPEED: 1200 RPM



A60 BEARING
 LUBRICATION TYPE: GREASE
 LOAD RATING: 1770 LBS.
 TEMP. RATING: -20 F TO 185 F
 MAX SPEED: 1200 RPM



A63 BEARING
 LUBRICATION TYPE: GREASE
 LOAD RATING: 1000 LBS.
 TEMP. RATING: -4 F TO 180 F
 MAX SPEED: 200 RPM



A66 BEARING
 LUBRICATION TYPE: GREASE
 LOAD RATING: 1000 LBS.
 TEMP. RATING: -20 F TO 220 F
 MAX SPEED: 1200 RPM

SPECIFICATIONS

BETWEEN FRAME: 6" - 61"

ROLL CONSTRUCTION: Round tube, 2.625" Diameter, 7 Gauge, HRPO.

BEARINGS: Standard (A50) Non-precision. Optional Non-precision, Semi-precision and Precision bearings; oiled or grease packed. All bearings with 11/16" hex axle.

AXLE RETENTION: Standard 3" Spring staked one side. Optional cotter pins.

ROLLER SURFACE: Standard Carbon Steel.

Model: R2607 - Roller Assembly

REV	0
LEWCO	