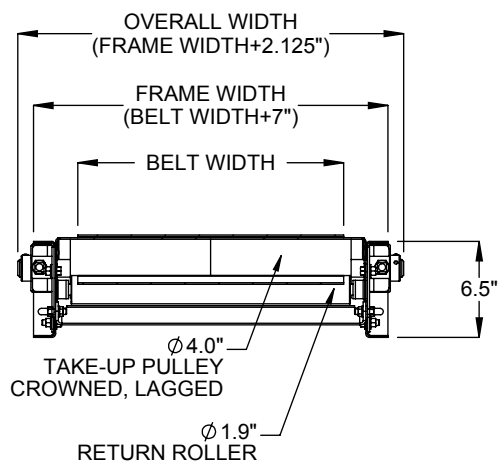


**CENTER DRIVE, LEFT HAND SIDE (SHOWN)
RIGHT HAND SIDE OPPOSITE AS SHOWN**



**SECTION A-A
TAKE-UP END**

ALL PRODUCT, PRODUCT SPECIFICATIONS AND DATA ARE SUBJECT TO CHANGE WITHOUT NOTICE TO IMPROVE RELIABILITY, FUNCTION OR DESIGN OR OTHERWISE.

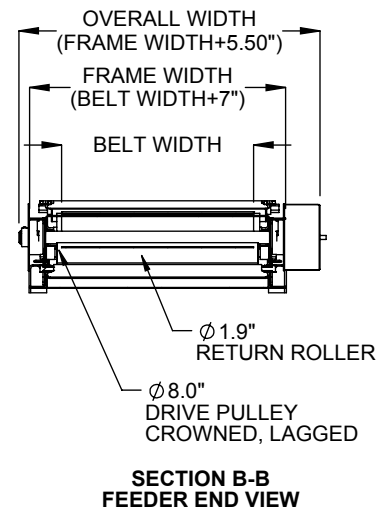
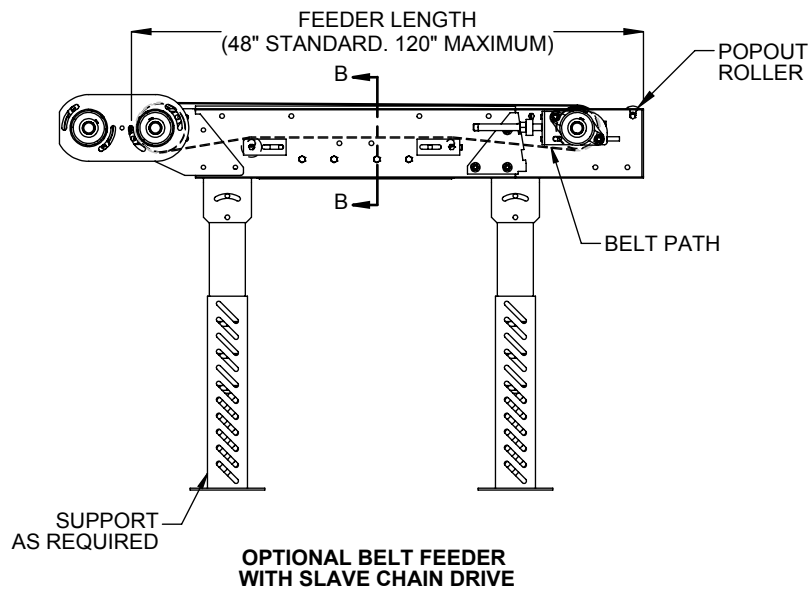
SPECIFICATIONS	
BELT WIDTH: 12", 18", 24", 30", 36"	
BEGINNING ELEVATION: 7.5" - 99"	LENGTH: 120" - 600"
ENDING ELEVATION: 7.5" - 240"	SPEED: 15 - 150 FPM
FLOOR TO FLOOR HEIGHT: 0" - 240"	NOSEOVER LENGTH: 27" - 120"
INCLINED ANGLE: 10° - 25°	FEEDER LENGTH: 48" - 120"
BED: 6-1/2" x 1-1/2" deep x 1/8" formed steel pan.	
BELT: <u>Standard</u> belt is Trackmate Roughtop with clipper lace. <u>Optional</u> belt is Trackmate Longitudinal groove. Other belt options available.	
DRIVE: <u>Standard</u> drive is Center drive right hand. <u>Optional</u> drive is Center drive left hand.	
FEEDER: <u>Optional</u> feeder available.	
MOTOR: 3/4 HP through 2 HP. Energy efficient, inverter duty, and brake motors also available. Voltages include 120/1/60, 230/3/60, 460/3/60, 575/3/60 & DC Voltage.	
SUPPORT CENTERS: <u>Standard</u> supports are for two floor applications. <u>Optional</u> supports include tall floor supports (120" maximum) and ceiling hangers for elevated sections.	
FRAME FINISH: <u>Standard</u> finish is OSHA safety blue powder. <u>Optional</u> colors include green, beige, gray, orange, black and yellow.	

Model: FTFSB - Floor To Floor Slider Bed Conveyor

REV

2





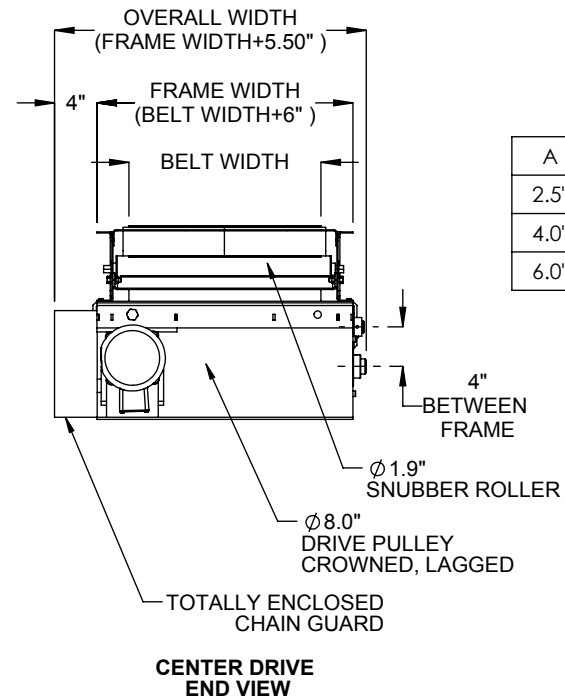
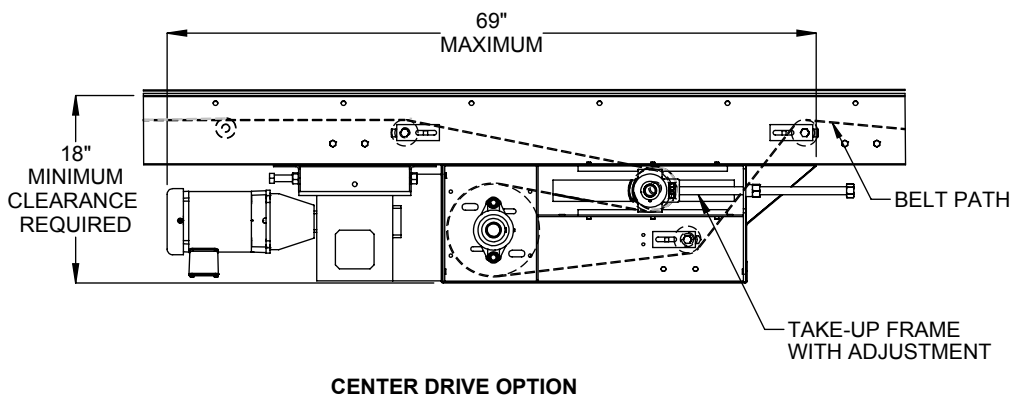
LOAD CAPACITY @ 60 FPM & 25° INCLINED ANGLE (LBS)

HP	WIDTH				
	12"	18"	24"	30"	36"
3/4	240	235	230	225	220
1	320	315	310	305	300
1 1/2	485	480	475	470	465
2	650	645	640	635	630

LOAD CAPACITY @ 30 FPM & 25° INCLINED ANGLE (LBS)

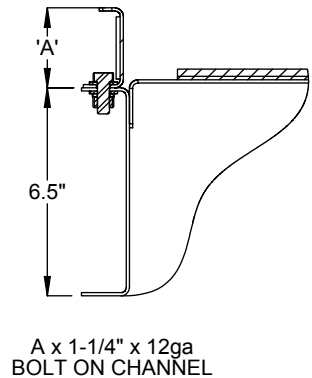
HP	WIDTH				
	12"	18"	24"	30"	36"
3/4	485	480	475	470	465
1	650	645	640	635	630
1 1/2	-	970	965	960	955
2	-	-	1295	1290	1285

MAXIMUM LOAD PER LINEAR FOOT OF CONVEYOR IS 100 POUNDS - NOT TO EXCEED CAPACITY ABOVE



GUARDRAIL OPTION

A
2.5"
4.0"
6.0"



ALL PRODUCT, PRODUCT SPECIFICATIONS AND DATA ARE SUBJECT TO CHANGE WITHOUT NOTICE TO IMPROVE RELIABILITY, FUNCTION OR DESIGN OR OTHERWISE.