

# DRUM HEATING CABINETS

## Electric Enclosure Options

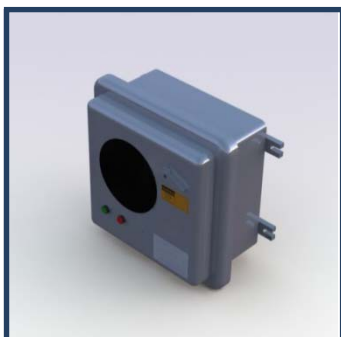


### NEMA 12:

- Typically used for indoor applications
- Prevents ingress of dust and dripping water and oil
- Features a gasketed door to protect from airborne contaminants and non-pressurized water and oil

### NEMA 3:

- Typically used for outdoor applications
- Provides protection against falling rain, sleet, snow, and ice formation
- Can be used indoors to protect against dripping of non-corrosive liquids
- No door gasket



### NEMA 7:

- For use in electrically classified hazardous areas (Class 1, Div. 1, Group D)
- Typically used where ignitable fumes or vapors are present
- Protects against internal explosion
- No door gasket