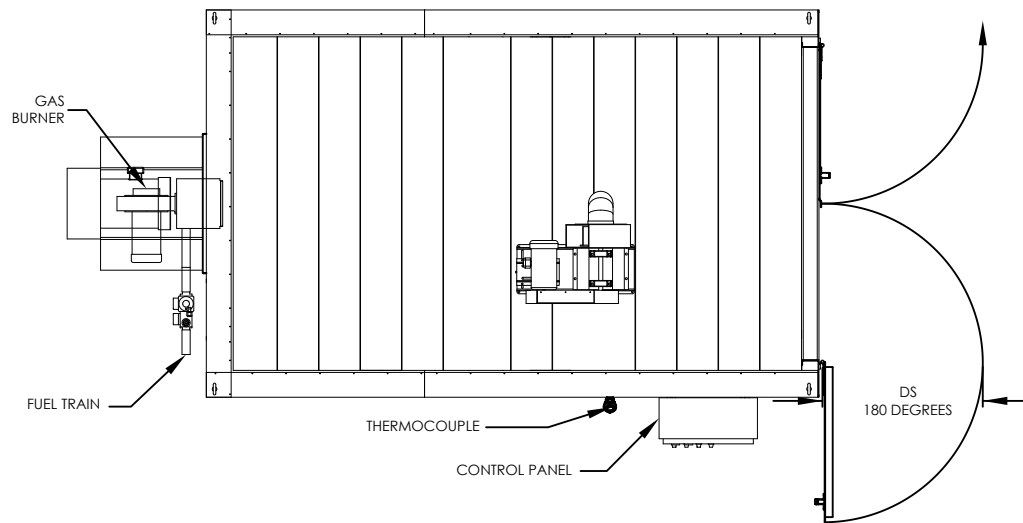


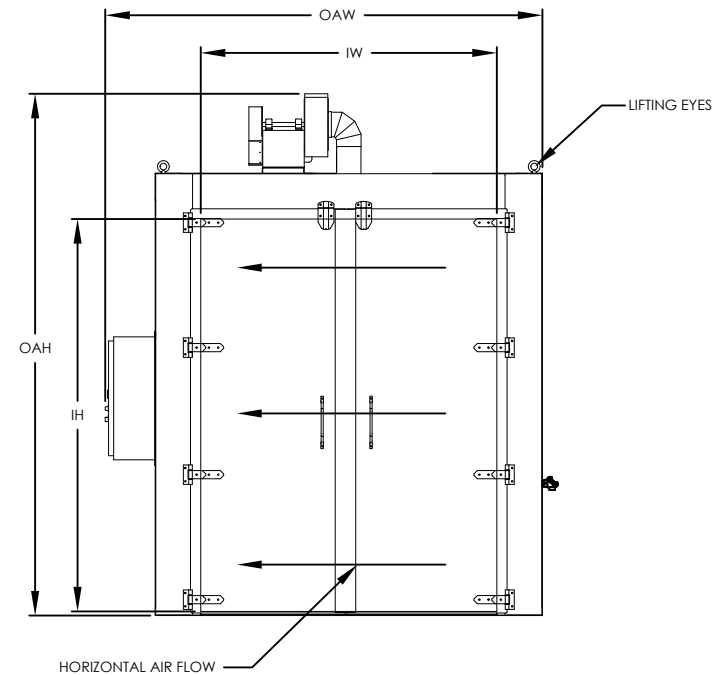
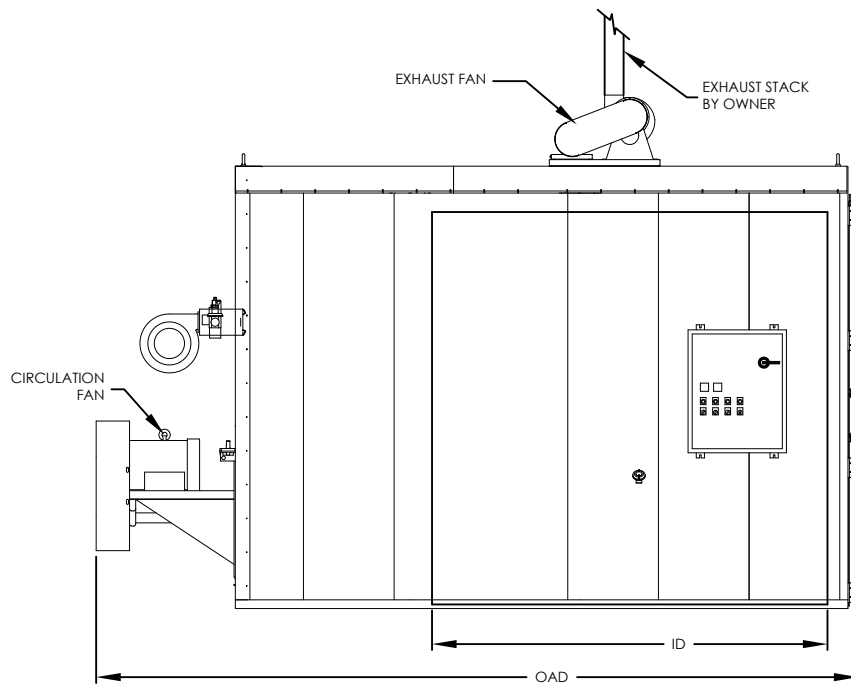


**Enhanced Walk-In Oven, Rear Heater, 1200 F, Fuel Fired, Horizontal Air Flow  
NFPA Class B**

Model	Workspace Dimensions			Heat Input	Circulating Blower (CFM)	Exhaust (ACFM)	Ships
	"W	"D	"H				
EWR12FH-48-48-60	48	- 48	- 60	400,000 BTUH	3500	500	Fully Assembled
EWR12FH-48-48-72	48	- 48	- 72	400,000 BTUH	4000	500	Fully Assembled
EWR12FH-48-48-96	48	- 48	- 96	700,000 BTUH	5500	500	Fully Assembled
EWR12FH-48-72-72	48	- 72	- 72	700,000 BTUH	5500	500	Fully Assembled
EWR12FH-48-72-96	48	- 72	- 96	700,000 BTUH	8000	750	Fully Assembled
EWR12FH-48-96-72	48	- 96	- 72	700,000 BTUH	8000	750	Fully Assembled
EWR12FH-48-96-96	48	- 96	- 96	700,000 BTUH	10000	750	Fully Assembled
EWR12FH-60-60-60	60	- 60	- 60	700,000 BTUH	5000	500	Fully Assembled
EWR12FH-60-60-72	60	- 60	- 72	700,000 BTUH	6000	500	Fully Assembled
EWR12FH-60-60-96	60	- 60	- 96	700,000 BTUH	8000	750	Fully Assembled
EWR12FH-60-72-72	60	- 72	- 72	700,000 BTUH	7000	750	Fully Assembled
EWR12FH-60-72-96	60	- 72	- 96	700,000 BTUH	10000	750	Fully Assembled
EWR12FH-60-96-96	60	- 96	- 96	700,000 BTUH	14000	750	Fully Assembled
EWR12FH-72-72-72	72	- 72	- 72	700,000 BTUH	9000	750	Fully Assembled
EWR12FH-72-72-96	72	- 72	- 96	700,000 BTUH	12000	750	Fully Assembled
EWR12FH-72-96-96	72	- 96	- 96	700,000 BTUH	16000	750	Fully Assembled



MODEL	WORKSPACE DIMENSIONS				OVERALL DIMENSIONS		
	IW (in)	ID (in)	IH (in)	DS (in)	OAW (in)	OAD (in)	OAH (in)
EWR12FH-48-48-60	48	48	60	34	82	109	87
EWR12FH-48-48-72	48	48	72	34	82	113	99
EWR12FH-48-48-96	48	48	96	34	82	119	123
EWR12FH-48-72-72	48	72	72	34	82	147	99
EWR12FH-48-72-96	48	72	96	34	82	153	123
EWR12FH-48-96-72	48	96	72	34	82	177	99
EWR12FH-48-96-96	48	96	96	34	82	177	123
EWR12FH-60-60-60	60	60	60	40	94	131	87
EWR12FH-60-60-72	60	60	72	40	94	135	99
EWR12FH-60-60-96	60	60	96	40	94	141	123
EWR12FH-60-72-72	60	72	72	40	94	153	99
EWR12FH-60-72-96	60	72	96	40	94	153	123
EWR12FH-60-96-96	60	96	96	40	94	184	123
EWR12FH-72-72-72	72	72	72	46	106	153	99
EWR12FH-72-72-96	72	72	96	46	106	153	123
EWR12FH-72-96-96	72	96	96	46	108	189	123



THE NATIONAL FIRE PROTECTION ASSOCIATION'S STANDARD NFPA 86 DOCUMENTS GUIDELINES FOR THE SAFE OPERATION OF OVENS AND FURNACES. THIS STANDARD DEFINES AN OVEN OCCASIONED BY THE PRESENCE OF FLAMMABLE VOLATILES OR COMBUSTIBLE MATERIAL AS "CLASS A" AND FURTHER MANDATES SPECIFIC SAFETY EQUIPMENT ON THESE OVENS TO REDUCE THE RISK OF FIRE OR EXPLOSION. SIMILARLY, OVENS OR FURNACES WHEREIN NO FLAMMABLE VOLATILES OR COMBUSTIBLE MATERIALS ARE PRESENT ARE CONSIDERED "CLASS B". IT IS IMPERATIVE THAT THE USER OF HEAT PROCESSING EQUIPMENT BE KNOWLEDGEABLE REGARDING APPLICATION OF THE EQUIPMENT.

MODEL: EWR12FH  
 DESCRIPTION: Enhanced Walk-In Oven, Rear Heater, 1200 F, Gas, Horizontal Air Flow  
 DRAWING: EWR12FH SALES

LEWCO, INC. IS COMMITTED TO CONTINUOUS IMPROVEMENT AND RESERVES THE RIGHT TO CHANGE DESIGNS AND SPECIFICATIONS WITHOUT NOTICE.  
 THIS DRAWING IS CONFIDENTIAL AND MUST NOT BE COPIED, REPRODUCED OR USED FOR ANY PURPOSE WITHOUT THE WRITTEN CONSENT OF LEWCO, INC. ALL RIGHTS RESERVED.

DATE 4/30/2014  
 REV 001  
 PAGE 1 OF 1

